

Report on Parent Survey on Youth Substance Use, Wilton, Connecticut, 2011

Report Prepared by:

Archie C. Swindell, PhD, Quantitative Services

April 13, 2012

ACKNOWLEDGEMENTS

This parent survey was sponsored by the Wilton Task Force to Reduce Underage Drinking, and Positive Directions-The Center for Prevention & Recovery. It was administered in November-December, 2011, with the cooperation and active participation of Wilton Public Schools. A total of 468 parents of students in Middlebrook School (grades 6-8) and Wilton High School (grades 9-12) participated by completing the survey on-line.

This survey was given in conjunction with a survey of youth of the same student population, given during the same time period. The youth survey is the subject of a separate report [1]. The youth survey was derived from the Connecticut Governor's Prevention Initiative for Youth (GPIY) survey, which was designed to ascertain prevalence, attitudes and behaviors related to use of substances (tobacco, alcohol, and illicit drugs). The parent survey uses language about parental perceptions taken directly from the youth survey, and also incorporates questions from the CASA National Survey of American Attitudes on Substance Abuse X: Teens and Parents [2]. All results of the survey are anonymous, and are intended for reporting only in summary form. The organization of this report draws upon reports of GPIY youth surveys for formatting and structure.

Positive Directions is a non-profit agency which has provided treatment, counseling and education programs to individuals and families in Fairfield County, Connecticut, since 1973. Quantitative Services has conducted statistical consulting and analysis for public agencies in Connecticut since 2001, and has provided internet access to youth and parent surveys since 2006.

PUBLIC DOMAIN NOTICE

This report is in the public domain and may be reproduced or copied without permission from Positive Directions, Wilton Public Schools, or Quantitative Services. Citation of the source is appreciated. The data on which this report is based are subject to confidentiality regulations of HIPAA [3].

DISCLAIMER

Opinions expressed herein are the views of the author and may not necessarily reflect the views, official policy or position of Positive Directions, Wilton Public Schools, or other participating agencies or individuals.

TABLE OF CONTENTS

Acknowledgements	1
Public Domain Notice	1
Disclaimer	1
Table of Contents	2
Summary	4
Methods	5
Results	6
References	9
 Section 1. Demography	
Table 1. Youth referenced by parent in survey	10
Table 2. Surveys analyzed	10
Table 3. Children in families of surveyed parents	10
Table 4. Race / ethnicity of surveyed parents	11
Table 5. Family structure	11
Table 6. Distribution of table categories	11
 Section 2. Family Structure and Practices	
Table 7. Family management	12
Table 8. Positive family involvement	13
Table 9. Issues facing parents of teenagers	14
Table 10. Issues facing teenagers, parent's opinion	16
 Section 3. Substance Use – Parents	
Table 11. Concerns for family youth	18
Table 12. Substance use and the law	19
Table 13. Adult practices in the family	19
Table 14. Perception of harm from substance use	20
Table 15. Comparisons with other parents	20
 Section 4. Substance Use – Youth	
Table 16. Reasons teens begin drinking	21
Table 17. Reasons teen choose not to drink	22
Table 18. Perception of practices of youth in family	24
Table 19. Peer use of substances	25
Table 20. Perception of strategies to prevent alcohol use	26

Section 5. School and Community

Table 21.	Perceptions about the schools	28
Table 22.	Perceptions about normative substance use	29
Table 23.	Perceptions of neighborhood environment	29
Table 24.	Neighborhood drug involvement	30
Table 25.	Availability of alcohol, tobacco, drugs and guns	31

Section 6. Comparisons

Table 26.	Recent substance use	32
Table 27.	Risk of harm from substance use	32
Table 28.	Availability of substances	32
Table 29.	Perception of the community	33
Table 30.	Family management	33
Table 31.	Strategies to prevent alcohol drinking	34
Table 32.	Reasons teens begin drinking	34
Table 33.	Reasons teens choose not to drink	35
Table 34.	Issues facing parents of teens	35
Table 35.	Issues facing teens	36

Section 7. Appendix: Survey Instrument

37

SUMMARY

Wilton parents participated in a survey of their perceptions and opinions about substance use by their oldest school-aged child (the “index” child) and by other Wilton youth. The survey was completed on-line in November-December, 2011, by 468 parents of youth in grades 6-12. The same survey was taken in 2007 by 335 Wilton parents. In both 2007 and 2011, the parent surveys were given in conjunction with substance-related surveys of Wilton youth. The 2011 parent results are tabulated in four ways: all parents, by grade-group, by gender of the index child, and by parental alcohol use.

According to the youth survey, the prevalence of recent alcohol consumption (i.e., in the previous 30 days) among high school youth (grades 9-12) decreased somewhat, from 43% in 2007 to 34% in 2011. Parents were asked if their child had consumed alcohol in the previous 30 days, and 18-20% of parents of youth in grades 9-12 said Yes, in both 2007 and 2011. Thus, either parents underestimate the use of alcohol by their children, or the survey was more likely to be completed by parents of children who are less likely to use alcohol. Parents were aware of the fact that children who usually spend two hours or more after school without adults present are more likely to drink alcohol, but analysis of the data shows that the parents may not be fully aware of the extent or frequency of drinking.

Parent perceptions that alcohol and marijuana are harmful decreased by about 10 percentage points, 2007 to 2011, but perceived high risk from cigarettes did not change. The availability of all substances decreased, according to parents. Parents of middle school youth thought substances to be more readily available in 2011 than did the youth in their survey. Antisocial activities like bullying or drug use in the neighborhoods have decreased since 2007, according to parents, but parents’ perceptions still exceed those of their children. The perception that having friends who do not drink is the best deterrent to their child’s drinking has not changed since 2007. Concerns over education of their children have markedly increased since 2007.

About 17% of parents of boys indicated that their child had used alcohol recently, compared to 11% of parents of girls. However, in the youth survey, prevalence of 30-day alcohol use was higher among girls than boys in all grades but one. Parents of boys were more concerned about teen use of alcohol and drugs than parents of girls. The perception of great risk of harm from teen use of both cigarettes and marijuana was high among parents of both genders in all grades, about 80%, but perceived risk from 1-2 alcoholic beverages per week decreased with increasing age of their child, from 75% (grades 6-8) to 55% (grades 11-12).

To determine if parents’ perceptions about substances might be influenced by their own use of alcohol, survey results were tabulated by the parent’s alcohol use score calculated from reported use patterns. Parents with alcohol consumption scores above the median (higher users) attributed somewhat less harm to all substances than parents with scores below the median (lower users). About 9% of higher users reported that teens other than their own child had consumed alcohol in their homes in the past year, about twice the prevalence of lower users. Lower users reported more secure storage of alcoholic beverages in the home. Higher users reported less drinking by their own child, but prevalence of their child riding with a driver who had been drinking was much greater.

METHODS

The survey instrument used to collect data in 2011 was essentially the same as in 2007 [4]. Both surveys included demographics, and questions from the concomitant youth survey and from a national survey of parents of teens [2]. The survey was implemented via computer on-line, using the SurveyMonkey.com® web site and software. There were extensive efforts to encourage parents to participate, including written notices sent from school, emails, and announcements in the local print media and on the school district web site.

Because there was no way to monitor or validate survey responses, an effort was made to detect spurious answers. An “extreme response” metric was used, in which each of 73 individual survey items contributed a value of 1 if the answer was “extreme”, and 0 otherwise. Examples of extreme Q/A are: (1) Q=How safe do you feel your child’s school is?; A=Very unsafe; (2) Q=If your child breaks family rules, is he/she usually disciplined?; A=Definitely not true; (3) Q=How concerned are you that your child might try an illicit drug (like cocaine or amphetamine) at some point?; A=Not concerned at all. Extreme values were summed for each respondent. The median was 14, mean was 13.1, and two values (36 and 38) were more than 3 standard deviations above the mean. These two surveys, plus two surveys from the low end of the scale (scores of 1 and 4) were excluded from analysis. This statistical procedure, termed “Winsorizing”, is a method of removing outliers without introducing bias, with little loss of power. There was no correlation between extreme response totals and number of entries per IP address, indicating that extreme or prankish entries from one or a few sites had not occurred. Sampling variance for each grade-group in the parent survey is 3-5%, based on approximately 150 respondents and 400 families per group.

A metric for parental alcohol consumption was calculated by adding up the 4-point Likert scores for the five alcohol-related questions in Table 13 for each respondent, subtracting 5, dividing by 15, and multiplying by 100. The score is in the range 0-100, and can be interpreted as a percent of maximum, the maximum being “frequently” to all situations. The median score for all respondents was 40, and parents were classified as equal to or below, or above, the median, for purposes of tabulation.

Survey results are tabulated in four ways: all parents (grades 6-12), by grade-group of the index child (grades 6-8, 9-10, and 11-12), by the gender of the child, and by the alcohol consumption score of the parent (above, or at or below, the median). Each of these categories included comparable numbers of parents in each subset. Categories such as parental perceptions of prevalence of the child’s drinking, or the harm of drinking, were not used for tabulations, because these categories are confounded with the age of the child. Responses of Wilton parents in 2011 are compared to responses to the same questions in the 2007 Wilton parent survey and in the 2011 Wilton youth survey, in Tables 26-34. Current data from towns demographically similar to Wilton were not available, to enable other comparisons.

All statistical and tabulation computations were carried out using Statistica® version 10.0 (StatSoft, Tulsa, OK). Data programming and formatting operations were carried out in Microsoft Excel 2010®, and the final report was produced in Microsoft Word 2010® and Adobe Acrobat® 8.0. All software is licensed to Quantitative Services.

RESULTS

More parents responded to this survey in 2011 than in 2007 (468 vs. 335). Numbers in each grade-group were adequate in 2011 for statistical analysis – 112 in grades 6-8, 152 in grades 9-10, and 202 in grades 11-12 (Tables 1,2). All but 4 of the surveys were used for tabulations, following “extreme response” trimming as described in Methods. Most parents described themselves as Caucasian (Table 4), with racial breakdown similar to U.S. Census figures. No tabulations by race or ethnicity were prepared because of low numbers of minorities. Two parents were present in most families (88%), with single-parent families comprising less than 9% of respondents (Table 5).

The “index” child, i.e. the child about whom the parent was asked to respond, was approximately equally divided, boys and girls, in each grade group (Table 6). There were also similar adult alcohol consumption patterns in each grade group. Thus, tabulations by gender of index child, and by adult alcohol consumption, are not confounded with age or school level of child – an important statistical consideration.

The survey was administered on-line using SurveyMonkey® between November 16 and December 16, 2011. Most responses occurred during the first week of offering, and in the first week of December, although significant numbers of responses were entered in the final week. A paper version of the survey was available, but was not used.

* * * *

More than 90% of parents responded to questions about family management by indicating a high degree of awareness of their child’s social habits (Table 7). About 10% of parents said their child usually spends more than two hours on weekdays without an adult present. The same question was asked in the youth survey, and prevalences were higher. Among youth in grades 11-12, for example, about 15% of parents indicated their child is without adults more than two hours, compared to about 30% of youth in the same grades. The relationship between time spent without adults and prevalence of alcohol consumption has been documented in many towns, and is also true in Wilton (Figures 1, 2).

Parents were asked about the frequency of their child’s use of cigarettes and alcohol (Table 18). Parents indicated that 11% of their children in grades 9-10, and about 26% grades 11-12, had used alcohol at least once in the previous 30 days. These estimates agree with median estimates of alcohol use by their child’s classmates (Table 22), but are approximately one-half the prevalences reported by youth in their survey: 25% in grades 9-10 and 47% in grades 11-12. Parents were cognizant of the relationship between time without adults after school and prevalence of alcohol consumption, as indicated in Figure 1 – which graphs the prevalence of any alcohol consumption in the previous 30 days versus time without adults, reported by youth and estimated by parents. Parent estimates are somewhat lower than youth reports, but the relationships (slopes) are similar. In Figure 2, however, parents appear to be less aware of the extent of drinking by youth (on 3 or more of the previous 30 days) who spend more than two hours without adults. The data suggest that fewer parents of higher-risk children completed the survey.

Positive family involvement in 2011 was very similar to 2007, with lots of chances to do fun things with the family and support when needed (Table 8). Engagement by parents in school work and activities declines in upper high school grades. Among issues facing parents of teenagers, those rated as most important were education, safety, and making right choices for the future (Table 9). Least important were dropping out of school, and religion. The top issues facing

teens, according to their parents, were acceptance and pressure by peers, coping with stress, and making good decisions (Table 10). Up to half of the parents were concerned that their child might try marijuana or other drug, but most felt they would know what to do if that occurred (Table 11).

Figure 1

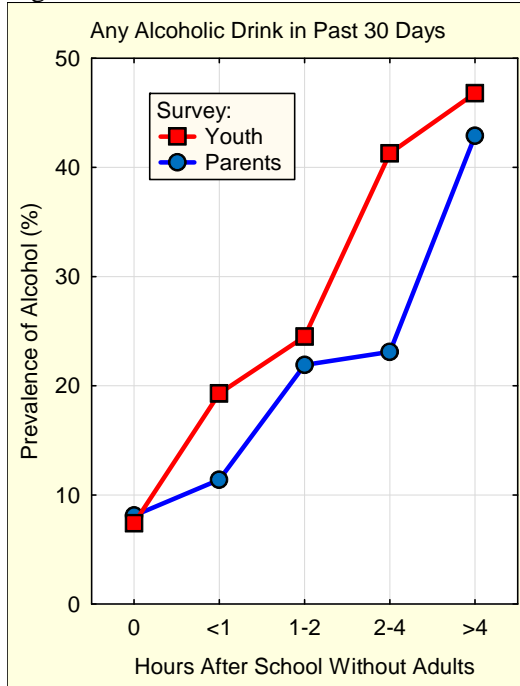


Figure 2

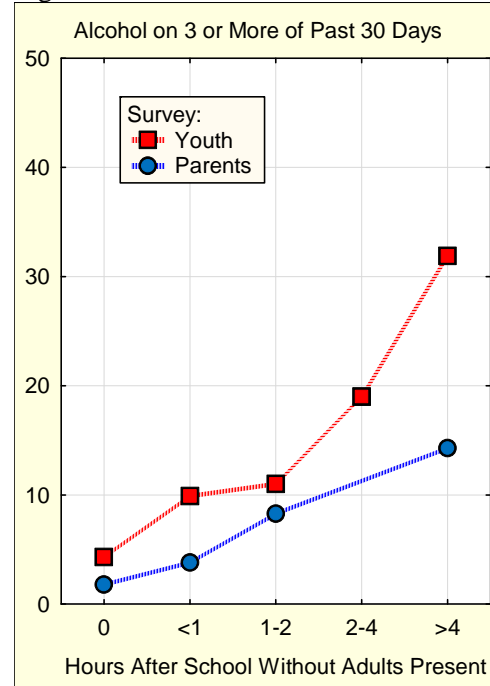
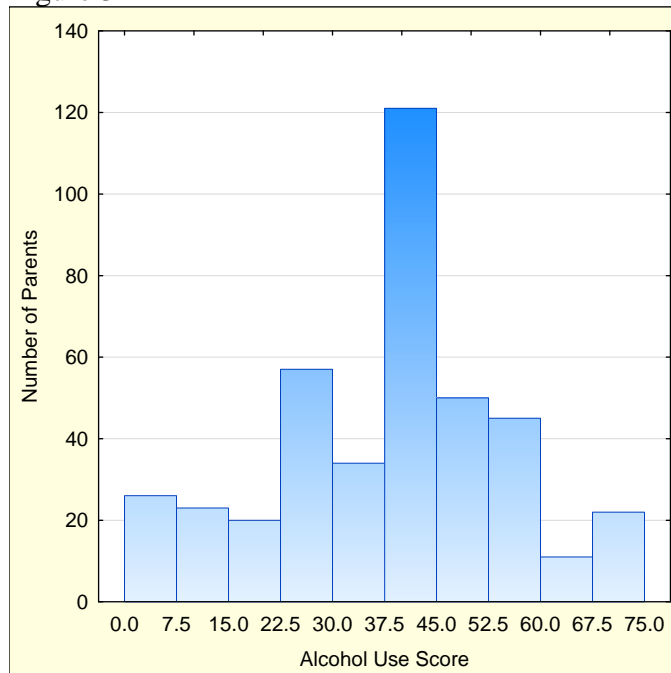


Figure 3



Parents whose own alcohol consumption was above the median of 40 (Figure 3) differed in some respects from those with lower reported consumption, although there were no appreciable differences for most measures. Higher alcohol users attributed somewhat less harm to regular use of cigarettes, alcohol and marijuana, although very few parents overall thought these substances are risk-free (Table 14). About 9% of higher users reported that teens other than their own child had consumed alcohol in their home in the past year, compared to 4% of lower users (Table 12). Lower users indicated more secure storage of alcoholic beverages in the home (Table 15), although all parents said they strictly enforce family rules (Table 7). Higher users rated curiosity and “having fun” as important reasons teens begin drinking (Table 16). Fewer higher users indicated that their child had alcohol to drink in the previous 30 days, but a much higher percentage indicated their child had ridden as a passenger with a driver who had been drinking (Table 18). “Fear of addiction” was one of the few strategies to prevent underage drinking on which the two groups disagreed (Table 20).

Parents of boys vs. girls responded essentially the same to most questions, but there were some differences. Boys were asked more often if their homework was done (Table 8). Safety and violence were less of an issue with parents of boys (Table 9), but peer pressure and drugs/alcohol were more of an issue than for girls (Table 10) and there was more concern about the future use of drugs by boys (Table 11). Coping with stress and making good decisions for the future were more issues with girls. Fewer girls were thought to have used alcohol in the previous 30 days (Table 18), and fewer of the peers of girls were thought to have used alcohol or marijuana, or to have played gambling games for money (Table 19). Parents of boys were more convinced of the effectiveness of parental strictness and driving suspension in discouraging underage drinking (Table 20). Most parents were at least “somewhat” satisfied with the quality of education of their child, but about 10% of parents of girls indicated dissatisfaction, compared with 6% of parents of boys. Girls generally earned higher grades than boys (Table 21).

There were some changes in opinions of parents, 2007 to 2011. For parents of youth in grades 9-12, there was a decrease of about 10 percentage points in perceived risk of great harm from use of alcohol and marijuana by youth, but no change in risk from cigarettes (Table 27). The perception that substances (cigarettes, alcohol, marijuana, and other illicit drugs) are easily available to youth decreased substantially. Parents of middle school youth thought the substances to be more readily available than did the youth themselves (Table 28). Parents tended to perceive neighborhoods as harboring more bullying and drug use than their children reported (Table 29). Opinions about family management (Table 30) and strategies to prevent underage drinking (Table 31) were remarkably stable. Perceived reasons teens begin drinking also showed little change from 2007, but were not closely aligned with opinions of the teens themselves (Table 32). Concerns of parents of teens, and teens themselves, were similar, 2007 to 2011, except for educational issues – which have greatly increased since 2007 (Table 34, 35).

REFERENCES

1. Swindell, AC, 2011 Youth Survey Report, Wilton, Connecticut, 3/2/2012
2. National Center on Addiction and Substance Abuse, Aug. 2005. National Survey of American Attitudes on Substance Abuse X: Teens and Parents.
http://www.casacolumbia.org/Absolutenm/articlefiles/Teen_Survey_Report_2005.pdf
3. U.S. Department of Health & Human Services. Office for Civil Rights – HIPAA. Medical Privacy – National Standards to Protect the Privacy of Personal Health Information.
<http://www.hhs.gov/ocr/hipaa/privacy.html>
4. Swindell, AC, 2007 Wilton Parent Survey, 3/21/2008.
<http://www.positivedirections.org/>

SECTION 1. DEMOGRAPHY

Table 1. Youth referenced by parent in survey

Grade	Gender				Total
	Female	Male	Both*	Missing	
	count	count	count	count	count
6	5	20	1	0	26
7	20	12	1	0	33
8	23	28	2	0	53
9	33	30	1	0	64
10	41	43	2	2	86
11	61	58	0	1	119
12	41	37	2	2	80
Missing	0	0	0	2	2
Total	224	228	9	7	468

* Both genders, in case of siblings in same grade.

Table 2. Surveys Analyzed

Category	All responses		Analyzable responses	
	count	%	count	%
Total respondents	468	100.0	460	98.3
Grade				
K-5	0	0.0	0	0.0
6-8	112	23.9	110	23.9
9-10	152	32.5	148	32.2
11-12	202	43.2	200	43.5
Missing	2	0.4	2	0.4
Excluded	4	0.9	0	0.0

Table 3. Children in families of surveyed parents

Children in	Grade of reference child		
	6-8	9-10	11-12
Grades:	count	count	count
Pre-school	3	1	0
K - 5	45	25	26
6-8	119	80	61
9-10	3	113	38
11-12	2	2	139

Table 4. Race / ethnicity of surveyed parents

Race/Ethnicity	count	%
Hispanic/Latino?		
No	354	77.0
Yes	7	1.5
Missing	99	21.5
Race		
White	340	73.9
Black/African American	4	0.9
Asian	11	2.4
Native American	1	0.2
Other	6	1.3
Missing	98	21.3

Table 5. Family structure

Thinking of the structure of your family, do the adults in your household include:	count	%
Both biological parents	378	82.2
Two adoptive parents	12	2.6
On biological and one step-parent	12	2.6
Two foster parents	3	0.7
Only one parent or guardian	22	4.8
One parent, frequent visits by other	19	4.1
Relatives who act as parents	4	0.9
Other	4	0.9
No response	6	1.3

Table 6. Distribution of table categories

Category	Grade of reference child		
	6-8	9-10	11-12
	%	%	%
Gender of index child			
Female	41.8	49.0	51.8
Male	54.5	49.0	47.2
Both (siblings)	3.6	2.0	1.0
Parental alcohol consumption			
Below median	51.8	43.9	47.0
Above median	48.2	56.1	53.0

SECTION 2. FAMILY PRACTICES & ISSUES

Table 7. Family management

Question/Response	Oldest Child in Grade			Gender of Child		All Parents	Adult Alcohol Use	
	6-8	9-10	11-12	Female	Male		Low	High
	%	%	%	%	%	%	%	%
On a regular weekday, how many hours does your child spend without an adult present?								
None	40.0	25.9	19.3	23.7	28.7	26.4	31.0	22.3
Less than 1 hour	36.4	36.7	33.0	35.6	35.0	35.0	36.6	33.6
1-2 hours	15.5	28.6	33.0	29.2	26.0	27.3	26.4	28.2
3-4 hours	5.5	6.1	9.6	7.8	7.2	7.5	4.6	10.1
More than 4 hours	2.7	2.7	5.1	3.7	3.1	3.7	1.4	5.9
On a typical weekend, how many hours per day does your child spend without an adult present?								
None	32.7	7.5	12.2	10.6	20.2	15.7	20.4	11.4
Less than 1 hour	20.0	15.1	7.6	14.2	12.1	13.0	13.4	12.7
1-2 hours	35.5	37.0	31.5	35.3	34.1	34.2	35.2	33.3
3-4 hours	8.2	34.2	31.5	29.4	24.2	26.7	24.1	29.1
5-8 hours	1.8	4.8	10.7	6.9	6.3	6.6	4.6	8.4
More than 8 hours	1.8	1.4	6.6	3.7	3.1	3.8	2.3	5.1
When our child is away from home, my spouse or I know where he/she is, and with whom.								
Definitely not true	1.8	0.0	3.4	1.0	2.4	1.9	0.5	3.3
Mostly not true	0.9	0.7	1.7	0.5	1.9	1.2	2.3	0.0
Mostly true	3.6	13.2	31.3	17.2	19.9	18.4	14.4	22.5
Definitely true	93.6	86.0	63.7	81.3	75.8	78.6	82.9	74.2
After my child has been out with friends, I would know if he/she had been drinking or using drugs.								
Definitely not true	2.8	0.7	2.2	1.5	1.9	1.9	1.9	1.9
Mostly not true	0.9	2.2	7.3	3.5	4.7	4.0	2.3	5.8
Mostly true	15.6	30.1	35.2	26.2	31.8	28.5	27.3	29.8
Definitely true	80.7	66.9	55.3	68.8	61.6	65.6	68.5	62.5
If our child breaks family rules, he/she is usually disciplined.								
Definitely not true	0.9	2.2	2.8	3.5	0.5	2.1	1.4	2.9
Mostly not true	0.9	2.2	3.4	2.0	2.9	2.4	2.8	1.9
Mostly true	35.8	23.5	36.2	32.2	33.0	32.0	30.1	34.0
Definitely true	62.4	72.1	57.6	62.4	63.6	63.5	65.7	61.2

Table 8. Positive family involvement

Question/Response	Oldest Child in Grade			Gender of Child		All Parents	Adult Alcohol Use	
	6-8	9-10	11-12	Female	Male		Low	High
	%	%	%	%	%	%	%	%
We give our child lots of chances to do fun things with our family.								
Definitely not true	0.9	1.5	2.8	2.5	1.0	1.9	0.5	3.4
Mostly not true	4.6	2.2	7.9	5.0	5.7	5.2	4.6	5.8
Mostly true	24.8	31.6	33.7	32.7	29.0	30.7	27.8	33.8
Definitely true	69.7	64.7	55.6	59.9	64.3	62.2	67.1	57.0
We give our child help and support when he/she needs it.								
Definitely not true	0.9	0.7	2.8	2.0	1.0	1.7	0.9	2.4
Mostly not true	0.9	0.0	2.3	1.5	1.0	1.2	0.5	1.9
Mostly true	7.3	8.8	11.3	10.9	8.6	9.5	7.0	12.1
Definitely true	90.8	90.4	83.6	85.6	89.5	87.7	91.6	83.6
Our child shares thoughts and feelings with me or my spouse.								
Definitely not true	3.7	3.0	4.5	4.5	2.9	3.8	1.4	6.3
Mostly not true	4.6	12.6	9.0	6.9	11.5	9.0	9.8	8.2
Mostly true	50.5	47.4	47.8	44.1	53.1	48.3	48.4	48.3
Definitely true	41.3	37.0	38.8	44.6	32.5	38.9	40.5	37.2
We usually ask if our child's homework is done.								
Definitely not true	0.9	1.5	5.1	5.0	0.5	2.9	1.9	3.9
Mostly not true	1.8	4.5	7.9	6.4	4.3	5.2	5.6	4.9
Mostly true	10.1	14.2	20.9	18.8	12.6	16.0	14.5	17.5
Definitely true	87.2	79.9	66.1	69.8	82.6	76.0	78.0	73.8
My spouse or I participate in our child's activities at school, including attendance at school events?								
Definitely not true	3.7	3.7	5.6	6.0	2.9	4.5	3.7	5.3
Mostly not true	5.5	3.0	6.7	4.5	6.2	5.2	4.2	6.3
Mostly true	15.6	25.4	23.0	20.9	23.0	21.9	16.8	27.1
Definitely true	75.2	67.9	64.6	68.7	67.9	68.4	75.2	61.4

Table 9. Issues facing parents of teenagers

Question/Response	Oldest Child in Grade			Gender of Child		All Parents	Adult Alcohol Use	
	6-8	9-10	11-12	Female	Male		Low	High
	%	%	%	%	%	%	%	%
<u>What do you feel are the most important issues you face today as the parent of a teenager?</u>								
Safety								
Of great concern	60.8	50.0	52.2	55.2	52.6	53.7	54.5	52.8
Of some concern	37.3	39.7	37.9	39.3	37.2	38.3	34.9	42.2
Not an issue	2.0	10.3	9.9	5.5	10.2	8.0	10.5	5.0
Score*	79.4	69.8	71.1	74.9	71.2	72.9	72.0	73.9
Violence/Crime								
Of great concern	28.4	17.5	20.4	23.0	19.8	21.5	21.9	21.1
Of some concern	45.1	54.0	52.5	53.6	49.2	51.0	46.7	56.1
Not an issue	26.5	28.6	27.2	23.5	31.0	27.4	31.4	22.8
Score*	51.0	44.4	46.6	49.7	44.4	47.1	45.2	49.2
Drugs/Alcohol								
Of great concern	53.5	61.1	50.6	50.3	57.7	54.8	49.5	60.9
Of some concern	41.6	31.7	35.2	36.6	35.7	35.7	37.1	34.1
Not an issue	5.0	7.1	14.2	13.1	6.6	9.5	13.3	5.0
Score*	74.3	77.0	68.2	68.6	75.5	72.6	68.1	77.9
Education								
Of great concern	79.4	70.6	76.5	77.6	73.6	75.4	76.7	73.9
Of some concern	15.7	13.5	15.4	14.2	15.2	14.9	13.3	16.7
Not an issue	4.9	15.9	8.0	8.2	11.2	9.7	10.0	9.4
Score*	87.3	77.4	84.3	84.7	81.2	82.8	83.3	82.2
Dropping Out Of School								
Of great concern	4.9	8.7	7.4	7.1	6.6	7.2	8.6	5.6
Of some concern	12.7	5.6	11.7	8.2	11.7	10.0	10.0	10.0
Not an issue	82.4	85.7	80.9	84.7	81.7	82.8	81.4	84.4
Score*	11.3	11.5	13.3	11.2	12.4	12.2	13.6	10.6
Peer Pressure								
Of great concern	57.0	46.0	35.2	40.7	48.0	44.3	43.5	45.3
Of some concern	40.0	46.0	54.3	50.5	45.4	47.9	47.8	48.0
Not an issue	3.0	7.9	10.5	8.8	6.6	7.7	8.6	6.7
Score*	77.0	69.0	62.3	65.9	70.7	68.3	67.5	69.3
Communication With Teens								
Of great concern	51.0	44.0	37.7	40.7	45.7	43.2	43.1	43.3
Of some concern	43.1	46.4	47.5	44.0	47.7	46.0	45.9	46.1
Not an issue	5.9	9.6	14.8	15.4	6.6	10.8	11.0	10.6
Score*	72.5	67.2	61.4	62.6	69.5	66.2	66.0	66.4
Consistency of Discipline								
Of great concern	38.2	35.2	28.0	30.2	35.2	33.0	32.1	34.1
Of some concern	45.1	39.2	42.9	41.8	42.9	42.3	39.2	45.8
Not an issue	16.7	25.6	29.2	28.0	21.9	24.7	28.7	20.1
Score*	60.8	54.8	49.4	51.1	56.6	54.1	51.7	57.0
Teen Pregnancy/Sexuality								
Of great concern	23.5	26.2	19.9	24.6	20.9	22.9	23.0	22.8
Of some concern	53.9	50.0	49.7	48.1	53.1	50.9	49.3	52.8
Not an issue	22.5	23.8	30.4	27.3	26.0	26.2	27.8	24.4
Score*	50.5	51.2	44.7	48.6	47.4	48.3	47.6	49.2

Table 9. Issues facing parents of teenagers, continued

Question/Response	Oldest Child in Grade			Gender of Child		All Parents	Adult Alcohol Use	
	6-8	9-10	11-12	Female	Male		Low	High
	%	%	%	%	%	%	%	%
<u>What do you feel are the most important issues you face today as the parent of a teenager?</u>								
Morals/Family Values								
Of great concern	34.0	36.5	35.2	39.0	32.7	35.3	34.1	36.7
Of some concern	36.0	27.8	32.7	30.8	33.2	32.0	30.3	33.9
Not an issue	30.0	35.7	32.1	30.2	34.2	32.7	35.6	29.4
Score*	52.0	50.4	51.5	54.4	49.2	51.3	49.3	53.6
Media Influence/Cultural Environment								
Of great concern	56.4	53.2	34.4	47.0	46.4	46.3	47.6	44.7
Of some concern	37.6	35.7	47.5	39.8	41.3	41.1	38.0	44.7
Not an issue	5.9	11.1	18.1	13.3	12.2	12.7	14.4	10.6
Score*	75.2	71.0	58.1	66.9	67.1	66.8	66.6	67.0
Financial Issues								
Of great concern	16.7	24.0	26.5	24.7	22.8	23.1	23.9	22.2
Of some concern	54.9	43.2	48.8	46.7	48.7	48.6	49.3	47.8
Not an issue	28.4	32.8	24.7	28.6	28.4	28.3	26.8	30.0
Score*	44.1	45.6	50.9	48.1	47.2	47.4	48.6	46.1
Making Right Choices For Their Future								
Of great concern	52.9	56.8	56.5	57.7	53.6	55.7	54.8	56.7
Of some concern	43.1	33.6	34.2	33.0	39.3	36.3	37.5	35.0
Not an issue	3.9	9.6	9.3	9.3	7.1	8.0	7.7	8.3
Score*	74.5	73.6	73.6	74.2	73.2	73.8	73.6	74.2
Driving								
Of great concern	44.1	47.6	48.8	49.7	44.7	47.2	44.8	50.0
Of some concern	39.2	41.3	39.5	37.2	42.1	40.0	41.9	37.8
Not an issue	16.7	11.1	11.7	13.1	13.2	12.8	13.3	12.2
Score*	63.7	68.3	68.5	68.3	65.7	67.2	65.7	68.9
Religion								
Of great concern	5.1	12.9	10.2	12.4	7.8	9.7	10.3	9.0
Of some concern	28.3	29.8	36.9	30.3	34.2	32.4	32.5	32.2
Not an issue	66.7	57.3	52.9	57.3	58.0	57.9	57.1	58.8
Score*	19.2	27.8	28.7	27.5	24.9	25.9	26.6	25.1

* Score: Of great concern = 100, Of some concern = 50, Not an issue = 0.

Table 10. Issues facing teenagers, in parent's opinion

Question/Response	Oldest Child in Grade			Gender of Child		All Parents	Adult Alcohol Use	
	6-8	9-10	11-12	Female	Male		Low	High
	%	%	%	%	%	%	%	%
<u>From the point of view of teenagers like your own, what are the most important issues they face?</u>								
Fitting In/Social Activities								
Of great concern	81.4	66.4	62.3	69.1	67.7	68.7	67.8	69.7
Of some concern	14.7	30.4	32.7	27.6	27.2	27.2	27.4	27.0
Not an issue	3.9	3.2	5.0	3.3	5.1	4.1	4.8	3.4
Score*	88.7	81.6	78.6	82.9	81.3	82.3	81.5	83.1
Peer Pressure								
Of great concern	64.7	52.0	43.4	51.4	52.3	51.8	51.9	51.7
Of some concern	28.4	40.8	45.3	35.9	42.6	39.4	36.1	43.3
Not an issue	6.9	7.2	11.3	12.7	5.1	8.8	12.0	5.1
Score*	78.9	72.4	66.0	69.3	73.6	71.5	70.0	73.3
Acceptance of Self								
Of great concern	66.7	47.2	56.6	59.7	53.8	56.2	54.8	57.9
Of some concern	24.5	38.4	32.1	29.8	33.3	32.1	32.2	32.0
Not an issue	8.8	14.4	11.3	10.5	12.8	11.7	13.0	10.1
Score*	78.9	66.4	72.6	74.6	70.5	72.3	70.9	73.9
Drugs/Alcohol								
Of great concern	19.6	28.8	22.5	22.1	26.0	23.8	23.0	24.7
Of some concern	45.1	54.4	54.4	49.2	54.6	51.9	49.8	54.5
Not an issue	35.3	16.8	23.1	28.7	19.4	24.3	27.3	20.8
Score*	42.2	56.0	49.7	46.7	53.3	49.7	47.8	52.0
Education								
Of great concern	43.1	50.4	52.8	58.0	41.0	49.5	48.6	50.6
Of some concern	49.0	36.0	37.7	34.3	46.2	40.2	39.9	40.4
Not an issue	7.8	13.6	9.4	7.7	12.8	10.4	11.5	9.0
Score*	67.6	68.4	71.7	75.1	64.1	69.6	68.5	70.8
Dropping Out Of School								
Of great concern	1.0	3.2	3.8	2.8	3.1	2.9	3.4	2.2
Of some concern	16.7	8.1	10.8	11.1	12.4	11.5	12.6	10.1
Not an issue	82.4	88.7	85.4	86.1	84.5	85.7	84.0	87.6
Score*	9.3	7.3	9.2	8.3	9.3	8.6	9.7	7.3
Sexual Issues								
Of great concern	23.5	17.7	21.5	22.8	19.1	20.8	19.8	22.0
Of some concern	47.1	64.5	53.2	50.6	59.8	55.2	53.1	57.6
Not an issue	29.4	17.7	25.3	26.7	21.1	24.0	27.1	20.3
Score*	47.1	50.0	48.1	48.1	49.0	48.4	46.4	50.8
Gangs/Violence								
Of great concern	2.9	3.2	1.3	3.3	1.5	2.3	2.9	1.7
Of some concern	21.6	8.1	11.3	13.9	12.3	13.0	14.0	11.8
Not an issue	75.5	88.7	87.4	82.8	86.2	84.7	83.1	86.5
Score*	13.7	7.3	6.9	10.3	7.7	8.8	9.9	7.6
Gaining Independence								
Of great concern	43.6	38.2	42.1	40.8	41.2	41.3	42.7	39.5
Of some concern	46.5	43.9	44.0	45.8	43.8	44.6	43.7	45.8
Not an issue	9.9	17.9	13.8	13.4	14.9	14.1	13.6	14.7
Score*	66.8	60.2	64.2	63.7	63.1	63.6	64.6	62.4

Table 10. Issues facing teenagers, in parent's opinion – continued

Question/Response	Oldest Child in Grade			Gender of Child		All Parents	Adult Alcohol Use	
	6-8	9-10	11-12	Female	Male		Low	High
	%	%	%	%	%	%	%	%
<u>From the point of view of teenagers like your own, what are the most important issues they face?</u>								
Communication with Parents								
Of great concern	22.8	21.3	18.2	19.7	21.1	20.4	22.9	17.5
Of some concern	59.4	66.4	59.7	62.9	62.4	61.8	58.5	65.5
Not an issue	17.8	12.3	22.0	17.4	16.5	17.8	18.5	16.9
Score*	52.5	54.5	48.1	51.1	52.3	51.3	52.2	50.3
Coping With Stress								
Of great concern	48.0	44.7	57.5	58.7	44.4	50.9	49.3	52.8
Of some concern	46.1	48.0	37.5	36.9	48.0	43.1	44.0	42.1
Not an issue	5.9	7.3	5.0	4.5	7.7	6.0	6.8	5.1
Score*	71.1	68.7	76.3	77.1	68.4	72.5	71.3	73.9
Finding A Job								
Of great concern	9.8	10.6	23.3	16.8	15.4	15.6	15.5	15.7
Of some concern	29.4	37.4	43.4	38.5	36.9	37.8	37.9	37.6
Not an issue	60.8	52.0	33.3	44.7	47.7	46.6	46.6	46.6
Score*	24.5	29.3	45.0	36.0	33.8	34.5	34.5	34.6
Morals/Family Values								
Of great concern	9.8	13.8	12.6	13.4	11.3	12.2	13.6	10.7
Of some concern	43.1	38.2	45.3	43.0	42.1	42.4	42.2	42.7
Not an issue	47.1	48.0	42.1	43.6	46.7	45.3	44.2	46.6
Score*	31.4	32.9	35.2	34.9	32.3	33.5	34.7	32.0
Media Influence/Cultural Environment								
Of great concern	12.9	19.5	19.5	24.0	12.4	17.8	17.5	18.1
Of some concern	61.4	45.5	47.2	46.9	52.6	50.4	51.5	49.2
Not an issue	25.7	35.0	33.3	29.1	35.1	31.9	31.1	32.8
Score*	43.6	42.3	43.1	47.5	38.7	43.0	43.2	42.7
Financial Issues								
Of great concern	8.0	9.8	14.4	13.4	9.8	11.2	11.1	11.4
Of some concern	44.0	42.3	49.4	47.5	45.4	45.7	46.4	44.9
Not an issue	48.0	48.0	36.3	39.1	44.8	43.1	42.5	43.8
Score*	30.0	30.9	39.1	37.2	32.5	34.1	34.3	33.8
Making Good Decisions For Their Future								
Of great concern	34.7	41.5	47.8	48.3	36.4	42.3	40.8	44.1
Of some concern	49.5	47.2	45.9	42.1	51.8	47.3	49.5	44.6
Not an issue	15.8	11.4	6.3	9.6	11.8	10.4	9.7	11.3
Score*	59.4	65.0	70.8	69.4	62.3	65.9	65.5	66.4
Driving								
Of great concern	25.5	32.5	40.3	35.8	31.3	33.9	31.6	36.5
Of some concern	40.2	46.3	46.5	43.6	47.2	44.8	45.6	43.8
Not an issue	34.3	21.1	13.2	20.7	21.5	21.4	22.8	19.7
Score*	45.6	55.7	63.5	57.5	54.9	56.3	54.4	58.4
Religion								
Of great concern	2.9	5.1	3.2	4.6	3.1	3.7	6.4	0.6
Of some concern	27.5	33.1	24.8	27.6	28.5	28.1	27.0	29.5
Not an issue	69.6	61.9	72.0	67.8	68.4	68.2	66.7	69.9
Score*	16.7	21.6	15.6	18.4	17.4	17.8	19.9	15.3

* Score: Of great concern = 100, Of some concern = 50, Not an issue = 0.

SECTION 3. SUBSTANCE USE – PARENTS

Table 11. Concerns for family youth

Question/Response	Oldest Child in Grade			Gender of Child		All Parents	Adult Alcohol Use	
	6-8	9-10	11-12	Female	Male		Low	High
	%	%	%	%	%	%	%	%
How concerned are you that your child might try marijuana at some point?								
Very concerned	21.7	23.3	19.2	16.2	25.4	21.1	21.3	20.9
Somewhat concerned	38.7	37.2	32.2	33.5	37.6	35.4	34.3	36.7
Not very concerned	30.2	29.5	27.7	31.5	26.8	28.9	28.7	29.1
Not concerned at all	8.5	10.1	19.8	18.3	9.3	13.8	15.3	12.2
No opinion	0.9	0.0	1.1	0.5	1.0	0.7	0.5	1.0
How concerned are you that your child might try another illicit drug (like cocaine or amphetamine) at some point?								
Very concerned	23.6	15.6	17.7	14.8	22.2	18.6	16.7	20.6
Somewhat concerned	28.3	25.8	22.9	19.9	30.5	25.2	26.5	23.7
Not very concerned	32.1	36.7	28.0	34.2	29.1	31.8	29.3	34.5
Not concerned at all	14.2	21.1	30.3	30.1	16.7	23.2	27.4	18.6
No opinion	1.9	0.8	1.1	1.0	1.5	1.2	0.0	2.6
As a parent, how confident are you that you would know what to do if you believed your child was using alcohol?								
Very confident	34.0	47.3	46.9	43.7	42.9	43.7	48.1	38.7
Fairly confident	53.8	45.7	43.4	45.7	48.8	46.8	45.4	48.5
Not too confident	11.3	6.2	5.1	8.6	5.4	7.1	4.2	10.3
Not confident at all	0.9	0.8	2.3	1.5	1.5	1.5	1.4	1.5
No opinion	0.0	0.0	2.3	0.5	1.5	1.0	0.9	1.0
As a parent, how confident are you that you would know what to do if you believed your child was using illicit drugs?								
Very confident	31.1	40.3	42.3	39.3	37.7	38.8	39.8	37.6
Fairly confident	43.4	45.0	41.1	40.8	44.6	42.9	40.7	45.4
Not too confident	24.5	12.4	13.7	16.8	16.2	16.1	17.6	14.4
Not confident at all	0.0	2.3	1.7	2.0	1.0	1.5	1.4	1.5
No opinion	0.9	0.0	1.1	1.0	0.5	0.7	0.5	1.0
Have you ever in your life reached out for help from a doctor, counselor or other professional regarding your child's alcohol or drug use?								
No	41.5	48.8	50.6	49.7	46.1	47.7	41.2	54.9
Yes	0.9	3.1	9.1	4.1	5.9	5.1	5.1	5.1
Not applicable	57.5	48.1	40.3	46.2	48.0	47.2	53.7	40.0

Table 12. Substance use and the law

Question/Response	Oldest Child in Grade			Gender of Child		All Parents	Adult Alcohol Use	
	6-8	9-10	11-12	Female	Male		Low	High
	%	%	%	%	%	%	%	%
Did you know that Connecticut Legislature recently passed a state law that prohibits serving alcohol, even on private property, to underage youth who are not family members?								
No	21.0	13.3	11.7	14.1	14.4	14.6	18.1	10.6
Yes	79.0	86.7	88.3	85.9	85.6	85.4	81.9	89.4
In the past 12 months, some of my child's friends under age 21 consumed alcohol at our home.								
No	100.0	95.3	88.2	94.2	93.1	93.6	95.8	91.1
Yes	0.0	4.7	11.8	5.8	6.9	6.4	4.2	8.9
In the past 12 months, I provided alcohol to someone under age 21 other than my own child.								
No	99.1	99.2	97.7	97.9	99.0	98.5	99.5	97.4
Yes	0.9	0.8	2.3	2.1	1.0	1.5	0.5	2.6

Table 13. Adult practices in the family

Question/Response	Oldest Child in Grade			Gender of Child		All Parents	Adult Alcohol Use	
	6-8	9-10	11-12	Female	Male		Low	High
	%	%	%	%	%	%	%	%
Do any adults who live in your household smoke cigarettes?								
No	91.5	96.1	90.1	91.7	92.6	92.4	92.6	92.1
Yes	8.5	3.9	9.9	8.3	7.4	7.6	7.4	7.9
In the recent past, how would you characterize the use of alcohol by either you or your spouse?								
With meals at home or restaurants								
Never	7.5	7.0	8.2	7.8	7.9	7.7	13.9	0.5
Rarely	16.0	12.5	18.1	13.5	17.3	15.8	29.6	0.0
Sometimes	39.6	42.2	40.9	40.9	41.6	41.0	45.4	36.0
Frequently	36.8	38.3	32.7	37.8	33.2	35.6	11.1	63.5
Cocktail(s) before meals								
Never	40.0	33.9	40.6	36.3	39.6	38.3	65.0	8.0
Rarely	29.5	28.3	31.8	28.4	33.2	30.1	27.6	33.0
Sometimes	20.0	27.6	20.6	25.8	18.3	22.6	6.5	41.0
Frequently	10.5	10.2	7.1	9.5	8.9	9.0	0.9	18.1
At parties outside your home								
Never	4.8	5.6	10.5	8.9	5.9	7.5	14.1	0.0
Rarely	15.2	17.5	16.4	14.7	17.8	16.4	30.0	1.1
Sometimes	58.1	48.4	54.4	53.2	55.0	53.5	53.1	54.0
Frequently	21.9	28.6	18.7	23.2	21.3	22.6	2.8	45.0
Host parties at which alcohol is served								
Never	9.4	11.7	14.0	13.0	11.9	12.1	21.8	1.1
Rarely	31.1	30.5	27.5	23.8	34.2	29.4	43.5	13.2
Sometimes	44.3	39.8	48.0	47.2	42.1	44.4	31.9	58.7
Frequently	15.1	18.0	10.5	16.1	11.9	14.1	2.8	27.0
At bars								
Never	17.0	23.6	28.2	26.6	21.3	23.8	39.5	5.9
Rarely	43.4	29.1	28.8	32.3	33.2	32.8	40.0	24.5
Sometimes	32.1	36.2	36.5	34.4	37.1	35.2	20.0	52.7
Frequently	7.5	11.0	6.5	6.8	8.4	8.2	0.5	17.0

Table 14. Perception of harm from substance use

Question/Response	Oldest Child in Grade			Gender of Child		All Parents	Adult Alcohol Use	
	6-8	9-10	11-12	Female	Male		Low	High
	%	%	%	%	%	%	%	%
<u>How much do you think teenagers risk harming themselves (physically or in other ways) if they:</u>								
Smoke several cigarettes every day?								
No risk	4.1	4.1	5.2	5.1	4.2	4.5	6.5	2.3
Slight risk	1.0	5.0	1.9	4.0	1.6	2.7	2.0	3.4
Moderate risk	12.2	12.4	11.0	12.0	12.2	11.8	6.0	18.3
Great risk	82.7	78.5	81.9	78.9	82.0	81.0	85.4	76.0
Drink 1-2 alcoholic beverages at least once a week?								
No risk	2.0	4.1	5.8	5.1	3.7	4.3	6.0	2.3
Slight risk	5.1	3.3	10.3	9.1	4.2	6.7	4.5	9.1
Moderate risk	18.4	23.1	28.4	24.6	24.3	24.1	18.1	30.9
Great risk	74.5	69.4	55.5	61.1	67.7	65.0	71.4	57.7
Use marijuana regularly?								
No risk	2.1	3.3	5.8	4.0	4.3	4.0	5.6	2.3
Slight risk	5.2	0.8	1.3	2.9	1.6	2.2	1.5	2.9
Moderate risk	12.4	10.0	15.5	17.2	9.6	12.9	9.1	17.2
Great risk	80.4	85.8	77.4	75.9	84.6	80.9	83.8	77.6

Table 15. Comparisons with other parents

Question/Response	Oldest Child in Grade			Gender of Child		All Parents	Adult Alcohol Use	
	6-8	9-10	11-12	Female	Male		Low	High
	%	%	%	%	%	%	%	%
<u>How true are these statements?</u>								
In our home, our child could not access alcoholic beverages even if he/she wanted to (e.g., alcohol is stored in a locked cabinet).								
Certainly true	12.1	10.7	12.9	11.4	12.1	12.0	14.1	9.7
Maybe true	7.1	14.0	10.3	8.6	13.2	10.7	12.6	8.5
Maybe not true	10.1	9.1	6.5	9.7	6.8	8.3	7.5	9.1
Certainly not true	67.7	62.8	62.6	64.6	63.2	64.0	56.3	72.7
No alcoholic beverages in our home	3.0	3.3	7.7	5.7	4.7	5.1	9.5	0.0
My own concerns about underage drinking in general, compared to other parents I know, are:								
More concerned	17.7	22.3	27.7	19.0	27.7	23.4	24.4	22.3
About same concern	66.7	70.2	58.1	67.8	60.6	64.2	60.9	68.0
Less concerned	15.6	7.4	14.2	13.2	11.7	12.4	14.7	9.7
When it comes to monitoring my child's drinking, compared to other parents I know, I am:								
More strict	41.7	48.8	48.7	41.6	51.6	46.9	50.5	42.9
About same	52.1	49.6	44.2	51.4	44.7	48.0	44.9	51.4
More lenient	6.3	1.7	7.1	6.9	3.7	5.1	4.6	5.7

SECTION 4. SUBSTANCE USE – YOUTH

Table 16. Reasons teens begin drinking

Question/Response	Oldest Child in Grade			Gender of Child		All Parents	Adult Alcohol Use	
	6-8	9-10	11-12	Female	Male		Low	High
	%	%	%	%	%	%	%	%
<u>What do you think are the most important reasons teenagers begin drinking alcoholic beverages?</u>								
To fit in with friends								
Very	86.7	84.3	78.2	82.9	81.6	82.4	78.6	86.8
Somewhat	12.2	14.9	19.9	14.9	17.9	16.3	19.4	12.6
Not very	1.0	0.8	1.9	2.3	0.5	1.3	2.0	0.6
Score*	92.9	91.7	88.1	90.3	90.5	90.5	88.3	93.1
Parent or others in family drink								
Very	19.4	20.0	21.3	24.7	17.5	20.4	25.5	14.5
Somewhat	51.0	50.0	47.1	46.0	50.3	49.1	44.5	54.3
Not very	29.6	30.0	31.6	29.3	32.3	30.6	30.0	31.2
Score*	44.9	45.0	44.8	47.7	42.6	44.9	47.8	41.6
Alcoholic beverages easily available								
Very	43.9	35.8	35.3	40.8	34.2	37.7	41.3	33.5
Somewhat	38.8	50.8	48.7	41.4	52.6	46.8	43.3	50.9
Not very	17.3	13.3	16.0	17.8	13.2	15.5	15.4	15.6
Score*	63.3	61.3	59.6	61.5	60.5	61.1	62.9	59.0
Family tradition for special occasions								
Very	12.2	13.4	10.3	14.0	10.5	11.8	13.5	9.9
Somewhat	32.7	32.8	40.0	39.5	32.6	35.8	34.5	37.2
Not very	55.1	53.8	49.7	46.5	56.8	52.4	52.0	52.9
Score*	28.6	29.8	30.3	33.7	26.8	29.7	30.8	28.5
Fits chosen lifestyle								
Very	17.5	20.2	18.1	26.3	11.6	18.6	22.0	14.6
Somewhat	36.1	40.3	47.7	38.6	45.8	42.3	39.0	46.2
Not very	46.4	39.5	34.2	35.1	42.6	39.1	39.0	39.2
Score*	35.6	40.3	41.9	45.6	34.5	39.8	41.5	37.7
Boredom								
Very	34.7	44.6	43.9	46.9	37.2	41.8	41.3	42.3
Somewhat	43.9	35.5	34.4	33.7	40.8	37.2	35.8	38.9
Not very	21.4	19.8	21.7	19.4	22.0	21.0	22.9	18.9
Score*	56.6	62.4	61.1	63.7	57.6	60.4	59.2	61.7
Relieve stress								
Very	31.6	37.8	41.4	38.2	38.2	37.7	39.8	35.3
Somewhat	36.7	36.1	43.9	42.2	37.2	39.6	39.3	39.9
Not very	31.6	26.1	14.6	19.7	24.6	22.7	20.9	24.9
Score*	50.0	55.9	63.4	59.2	56.8	57.5	59.5	55.2
Coping with serious personal issues								
Very	34.0	44.5	42.9	38.2	43.9	41.1	42.2	39.9
Somewhat	44.3	30.3	42.9	43.9	36.0	39.2	41.7	36.4
Not very	21.6	25.2	14.1	17.9	20.1	19.6	16.1	23.7
Score*	56.2	59.7	64.4	60.1	61.9	60.8	63.1	58.1

Table 16. Reasons teens begin drinking, continued

Question/Response	Oldest Child in Grade			Gender of Child		All Parents	Adult Alcohol Use	
	6-8	9-10	11-12	Female	Male		Low	High
	%	%	%	%	%	%	%	%
<u>What do you think are the most important reasons teenagers begin drinking alcoholic beverages?</u>								
Curiosity								
Very	72.4	67.8	62.4	63.4	69.6	66.8	62.2	72.0
Somewhat	25.5	31.4	35.0	34.3	28.8	31.4	34.8	27.4
Not very	2.0	0.8	2.5	2.3	1.6	1.9	3.0	0.6
Score*	85.2	83.5	79.9	80.6	84.0	82.4	79.6	85.7
To have fun								
Very	64.9	57.9	66.0	62.4	63.9	63.1	57.0	70.1
Somewhat	30.9	38.0	33.3	34.7	33.5	34.2	39.5	28.2
Not very	4.1	4.1	0.6	2.9	2.6	2.7	3.5	1.7
Score*	80.4	76.9	82.7	79.8	80.6	80.2	76.8	84.2

Table 17. Reasons teens choose not to drink

Question/Response	Oldest Child in Grade			Gender of Child		All Parents	Adult Alcohol Use	
	6-8	9-10	11-12	Female	Male		Low	High
	%	%	%	%	%	%	%	%
<u>Thinking of teenagers who do not drink, what do you think are the most important reasons that influence them NOT to drink?</u>								
Personal choice								
Very	89.0	90.2	92.9	90.9	90.6	91.0	90.6	91.4
Somewhat	11.0	7.4	7.1	8.6	8.3	8.2	8.9	7.4
Not very	0.0	2.5	0.0	0.6	1.0	0.8	0.5	1.1
Score*	94.5	93.9	96.5	95.1	94.8	95.1	95.0	95.1
Disapproval of parent(s)								
Very	55.0	64.8	60.3	58.0	62.0	60.3	59.7	61.0
Somewhat	38.0	32.0	35.3	36.4	33.9	34.9	34.8	35.0
Not very	7.0	3.3	4.5	5.7	4.2	4.8	5.5	4.0
Score*	74.0	80.7	77.9	76.1	78.9	77.8	77.1	78.5
Disapproval of friends or peers								
Very	72.0	59.2	48.4	59.5	56.3	58.1	56.7	59.8
Somewhat	27.0	31.7	38.1	32.9	34.4	33.1	32.8	33.3
Not very	1.0	9.2	13.5	7.5	9.4	8.8	10.4	6.9
Score*	85.5	75.0	67.4	76.0	73.4	74.7	73.1	76.4
Bad experiences of family or friends								
Very	58.0	52.1	38.7	44.8	51.6	48.1	47.3	49.1
Somewhat	35.0	37.2	52.3	47.7	38.0	42.8	40.8	45.1
Not very	7.0	10.7	9.0	7.5	10.4	9.0	11.9	5.7
Score*	75.5	70.7	64.8	68.7	70.6	69.5	67.7	71.7
Education about alcohol								
Very	56.0	44.3	36.1	44.0	43.8	44.0	45.3	42.6
Somewhat	34.0	48.4	49.7	45.7	45.3	45.1	43.8	46.6
Not very	10.0	7.4	14.2	10.3	10.9	10.9	10.9	10.8
Score*	73.0	68.4	61.0	66.9	66.4	66.6	67.2	65.9

Table 17. Reasons teens choose not to drink, continued

Question/Response	Oldest Child in Grade			Gender of Child		All Parents	Adult Alcohol Use	
	6-8	9-10	11-12	Female	Male		Low	High
	%	%	%	%	%	%	%	%
<u>Thinking of teenagers who do not drink, what do you think are the most important reasons that influence them NOT to drink?</u>								
Health reasons								
Very	28.0	35.5	25.2	29.3	29.2	29.3	30.3	28.0
Somewhat	50.0	45.5	46.5	46.0	47.4	47.1	44.8	49.7
Not very	22.0	19.0	28.4	24.7	23.4	23.7	24.9	22.3
Score*	53.0	58.3	48.4	52.3	52.9	52.8	52.7	52.9
Legal reasons (including "I am too young")								
Very	24.2	32.5	26.5	30.6	24.1	27.8	29.4	26.0
Somewhat	44.4	45.0	41.3	38.7	48.2	43.3	45.8	40.5
Not very	31.3	22.5	32.3	30.6	27.7	28.9	24.9	33.5
Score*	46.5	55.0	47.1	50.0	48.2	49.5	52.2	46.2
Because they feel it is wrong (ethically or morally)								
Very	44.0	45.9	40.6	44.0	40.6	43.2	45.3	40.9
Somewhat	43.0	38.5	40.0	42.9	39.1	40.3	37.3	43.8
Not very	13.0	15.6	19.4	13.1	20.3	16.4	17.4	15.3
Score*	65.5	65.2	60.6	65.4	60.2	63.4	63.9	62.8
Does not fit chosen lifestyle (athletics or other activities)								
Very	48.0	46.7	46.5	53.1	40.1	46.9	49.8	43.8
Somewhat	44.0	44.3	44.5	40.0	49.0	44.3	39.3	50.0
Not very	8.0	9.0	9.0	6.9	10.9	8.8	10.9	6.3
Score*	70.0	68.9	68.7	73.1	64.6	69.1	69.4	68.8
Alcoholic beverages are not available								
Very	29.0	20.7	21.6	20.9	25.0	23.3	25.1	21.1
Somewhat	46.0	43.0	41.2	47.1	40.1	43.0	41.2	45.1
Not very	25.0	36.4	37.3	32.0	34.9	33.7	33.7	33.7
Score*	52.0	42.1	42.2	44.5	45.1	44.8	45.7	43.7

Table 18. Perception of practices of youth in family

Question/Response	Oldest Child in Grade			Gender of Child		All Parents	Adult Alcohol Use	
	6-8	9-10	11-12	Female	Male		Low	High
	%	%	%	%	%	%	%	%
<u>In the past 30 days, on how many days do you think your child probably</u>								
<u>Smoked at least one cigarette?</u>								
None	100.0	98.3	96.1	97.7	97.9	97.8	97.8	98.0
1-2 days	0.0	0.0	2.0	1.1	0.5	0.8	0.8	0.5
3-5 days	0.0	0.0	0.7	0.0	0.5	0.3	0.3	0.5
6-10 days	0.0	0.0	0.0	0.0	0.0	0.0	0.0	0.0
More than 10 days	0.0	1.7	1.3	1.1	1.1	1.1	1.1	1.0
Don't know	0.0	0.0	0.0	0.0	0.0	0.0	0.0	0.0
<u>Drank an alcoholic beverage (more than just a few sips)?</u>								
None	100.0	89.3	73.4	88.6	83.1	85.6	85.8	92.0
1-2 days	0.0	4.1	16.9	4.6	11.6	8.3	8.3	3.0
3-5 days	0.0	3.3	5.2	3.4	3.2	3.2	3.2	3.5
6-10 days	0.0	0.0	1.3	1.1	0.0	0.5	0.5	0.5
More than 10 days	0.0	1.7	0.0	0.6	0.5	0.5	0.5	0.5
Don't know	0.0	1.7	3.2	1.7	1.6	1.9	1.6	0.5
<u>In the past year, how often do you think your child has ridden as a passenger with a driver who had been drinking alcohol (including adults)?</u>								
Never	64.9	54.8	55.6	56.8	58.2	57.9	71.2	43.0
Rarely	24.7	35.7	35.1	32.5	33.2	32.5	24.6	41.3
Several times	9.3	8.7	8.6	10.7	7.1	8.8	3.7	14.5
Fairly often	1.0	0.9	0.7	0.0	1.6	0.8	0.5	1.2

Table 19. Peer use of substances

Question/Response	Oldest Child in Grade			Gender of Child		All	Adult Alcohol Use	
	6-8	9-10	11-12	Female	Male	Parents	Low	High
	%	%	%	%	%	%	%	%
<u>How many of your child's close friends do you think:</u>								
Smoke cigarettes?								
None	98.0	82.8	73.0	82.2	84.0	82.8	83.9	81.6
Some	2.0	17.2	27.0	17.8	16.0	17.2	16.1	18.4
Most	0.0	0.0	0.0	0.0	0.0	0.0	0.0	0.0
Drink alcoholic beverages?								
None	91.8	58.6	27.6	56.8	52.9	54.6	57.8	51.1
Some	8.2	39.7	54.6	34.9	39.6	37.4	34.9	40.2
Most	0.0	1.7	17.8	8.3	7.5	7.9	7.3	8.6
Use marijuana?								
None	96.9	70.7	48.3	72.2	66.1	68.5	69.8	67.1
Some	3.1	26.7	49.0	25.4	32.3	29.6	28.1	31.2
Most	0.0	2.6	2.6	2.4	1.6	1.9	2.1	1.7
Use inhalants (things you inhale, like glue, paint, aerosol sprays, whippets, or snappers)								
None	94.9	92.9	85.5	89.3	90.8	90.4	91.6	89.0
Some	5.1	7.1	13.8	10.1	9.2	9.4	8.4	10.5
Most	0.0	0.0	0.7	0.6	0.0	0.3	0.0	0.6
Have tried a drug like cocaine, LSD, heroin, amphetamine, or ketamine?								
None	98.0	96.5	85.5	91.1	93.0	92.3	90.6	94.2
Some	2.0	3.5	13.2	7.7	7.0	7.1	8.9	5.2
Most	0.0	0.0	1.3	1.2	0.0	0.5	0.5	0.6
Have used prescription medicines on their own, without a doctor telling them to?								
None	88.8	81.7	70.9	77.4	80.1	79.1	80.6	77.5
Some	10.2	18.3	27.8	20.8	19.9	20.1	18.3	22.0
Most	1.0	0.0	1.3	1.8	0.0	0.8	1.0	0.6
Have played games for money, like poker or blackjack?								
None	73.5	59.3	51.0	71.3	49.2	59.7	61.1	58.1
Some	23.5	31.9	43.7	24.6	43.8	34.5	36.3	32.6
Most	3.1	8.8	5.3	4.2	7.0	5.8	2.6	9.3
Are considered "bullies"?								
None	75.5	84.2	72.2	75.3	78.1	76.9	75.9	77.9
Some	24.5	15.8	27.2	24.1	21.9	22.9	24.1	21.5
Most	0.0	0.0	0.7	0.6	0.0	0.3	0.0	0.6

Table 20. Perception of strategies to prevent alcohol use

Question/Response	Oldest Child in Grade			Gender of Child		All	Adult Alcohol Use	
	6-8	9-10	11-12	Female	Male	Parents	Low	High
	%	%	%	%	%	%	%	%
<u>How important do you think the following are in preventing teenagers from drinking alcoholic beverages?</u>								
High price								
Very	11.3	11.3	8.2	9.0	10.4	10.0	13.8	5.9
Somewhat	36.1	37.4	39.5	40.4	37.2	37.9	37.0	38.8
Not Important	52.6	51.3	52.4	50.6	52.5	52.1	49.2	55.3
Score*	29.4	30.0	27.9	29.2	29.0	29.0	32.3	25.3
Checking ID in stores and bars								
Very	69.4	75.9	69.4	69.5	73.4	71.5	73.7	69.0
Somewhat	22.4	19.0	26.5	25.7	20.1	23.0	21.1	25.1
Not Important	8.2	5.2	4.1	4.8	6.5	5.5	5.3	5.8
Score*	80.6	85.3	82.7	82.3	83.4	83.0	84.2	81.6
Advertisements that show the problems associated with drinking								
Very	36.7	38.3	25.3	29.7	34.2	32.6	34.7	30.2
Somewhat	45.9	43.5	50.0	46.7	48.4	46.8	46.8	46.7
Not Important	17.3	18.3	24.7	23.6	17.4	20.6	18.4	23.1
Score*	59.7	60.0	50.3	53.0	58.4	56.0	58.2	53.6
Friends who don't drink								
Very	91.8	91.4	85.8	87.4	90.3	89.2	90.5	87.8
Somewhat	6.1	8.6	10.8	10.2	8.1	8.8	7.4	10.5
Not Important	2.0	0.0	3.4	2.4	1.6	1.9	2.1	1.7
Score*	94.9	95.7	91.2	92.5	94.3	93.6	94.2	93.0
Friends who disapprove of drinking								
Very	88.8	86.1	83.8	83.7	87.0	85.9	86.3	85.4
Somewhat	9.2	13.9	13.5	13.3	12.4	12.5	12.1	12.9
Not Important	2.0	0.0	2.7	3.0	0.5	1.7	1.6	1.8
Score*	93.4	93.0	90.5	90.4	93.2	92.1	92.4	91.8
Parental strictness about drinking								
Very	55.1	62.9	52.4	42.8	66.5	56.5	65.3	46.8
Somewhat	38.8	35.3	39.5	49.4	29.7	38.0	28.9	48.0
Not Important	6.1	1.7	8.2	7.8	3.8	5.5	5.8	5.3
Score*	74.5	80.6	72.1	67.5	81.4	75.5	79.7	70.8
Having driver's license suspended for drinking								
Very	68.4	69.0	70.9	61.7	75.7	69.6	73.7	65.1
Somewhat	22.4	27.6	20.9	31.1	17.8	23.5	20.0	27.3
Not Important	9.2	3.4	8.1	7.2	6.5	6.9	6.3	7.6
Score*	79.6	82.8	81.4	77.2	84.6	81.4	83.7	78.8
Being fined about \$200 for drinking								
Very	41.2	44.3	46.6	40.4	47.8	44.4	47.4	41.2
Somewhat	42.3	45.2	35.8	42.8	39.1	40.6	38.9	42.4
Not Important	16.5	10.4	17.6	16.9	13.0	15.0	13.7	16.5
Score*	62.4	67.0	64.5	61.7	67.4	64.7	66.8	62.4

Table 20. Perception of strategies to prevent alcohol use, continued

Question/Response	Oldest Child in Grade			Gender of Child		All Parents	Adult Alcohol Use	
	6-8	9-10	11-12	Female	Male		Low	High
	%	%	%	%	%	%	%	%
<u>How important do you think the following are in preventing teenagers from drinking alcoholic beverages?</u>								
Alcohol education in school								
Very	54.1	43.1	33.8	38.3	45.4	42.3	43.7	40.7
Somewhat	36.7	48.3	52.7	50.9	44.3	47.0	43.7	50.6
Not Important	9.2	8.6	13.5	10.8	10.3	10.8	12.6	8.7
Score*	72.4	67.2	60.1	63.8	67.6	65.7	65.5	66.0
Alcohol-free activities (like dances, concerts, or sporting events)								
Very	52.0	50.9	46.3	47.3	51.1	49.3	52.6	45.6
Somewhat	41.8	41.4	37.4	40.7	38.6	39.9	34.7	45.6
Not Important	6.1	7.8	16.3	12.0	10.3	10.8	12.6	8.8
Score*	73.0	71.6	65.0	67.7	70.4	69.3	70.0	68.4
Fear of addiction								
Very	30.6	27.0	27.0	30.7	26.5	28.0	32.6	22.8
Somewhat	32.7	53.9	34.5	36.7	42.2	40.2	37.9	42.7
Not Important	36.7	19.1	38.5	32.5	31.4	31.9	29.5	34.5
Score*	46.9	53.9	44.3	49.1	47.6	48.1	51.6	44.2
Breathalyzer tests								
Very	45.3	55.2	46.3	47.0	50.5	48.9	50.0	47.6
Somewhat	35.8	36.2	40.1	39.8	36.3	37.7	36.2	39.4
Not Important	18.9	8.6	13.6	13.3	13.2	13.4	13.8	12.9
Score*	63.2	73.3	66.3	66.9	68.7	67.7	68.1	67.4

SECTION 5. SCHOOL AND COMMUNITY

Table 21. Perceptions about the schools

Question/Response	Oldest Child in Grade			Gender of Child		All Parents	Adult Alcohol Use	
	6-8	9-10	11-12	Female	Male		Low	High
	%	%	%	%	%	%	%	%
How satisfied are you with the quality of education your child is receiving at his/her school?								
Very satisfied	59.1	63.4	48.4	55.8	55.7	55.8	57.9	53.8
Somewhat satisfied	35.5	31.3	38.6	33.5	38.1	35.5	35.2	35.8
Somewhat dissatisfied	3.6	3.0	9.8	7.3	5.2	6.1	5.6	6.6
Very dissatisfied	1.8	2.2	3.3	3.4	1.0	2.6	1.4	3.8
No opinion	0.0	0.0	0.0	0.0	0.0	0.0	0.0	0.0
How safe do you feel your child's school is?								
Very satisfied	49.5	52.2	56.0	54.6	51.4	53.1	53.2	53.1
Somewhat satisfied	48.6	44.9	41.8	42.9	47.2	44.5	45.4	43.7
Somewhat dissatisfied	0.9	2.9	1.1	2.0	1.4	1.6	1.4	1.9
Very dissatisfied	0.9	0.0	1.1	0.5	0.0	0.7	0.0	1.4
No opinion	0.0	0.0	0.0	0.0	0.0	0.0	0.0	0.0
What kind of grades does your child mostly get?								
A's	46.4	44.1	33.0	47.1	31.9	39.9	44.0	35.8
A's and B's	32.7	31.6	36.8	34.0	34.3	34.1	34.7	33.5
B's	13.6	16.9	18.9	14.6	19.7	16.9	14.4	19.5
B's and C's	4.5	2.9	6.5	1.9	8.0	4.9	4.2	5.6
C's	1.8	3.7	3.2	1.0	5.2	3.0	2.3	3.7
C's and D's	0.0	0.7	0.5	0.5	0.5	0.5	0.0	0.9
D's	0.0	0.0	0.0	0.0	0.0	0.0	0.0	0.0
D's and F's	0.0	0.0	0.0	0.0	0.0	0.0	0.0	0.0
F's	0.9	0.0	1.1	1.0	0.5	0.7	0.5	0.9

Table 22. Perceptions about normative substance use

Question/Response	Oldest Child in Grade			Gender of Child		All Parents	Adult Alcohol Use	
	6-8	9-10	11-12	Female	Male		Low	High
	%	%	%	%	%	%	%	%
<u>If you had to guess, about how many students in your child's grade do you think:</u>								
Drink alcoholic beverages at least once a week?								
None	17.2	3.3	2.6	4.0	8.9	6.7	6.1	7.4
Fewer than 10%	60.6	27.3	10.4	26.4	31.6	29.1	28.3	30.1
10-25%	19.2	36.4	15.6	23.6	23.2	23.3	24.7	21.6
25-50%	2.0	23.1	35.1	25.3	20.5	22.5	23.7	21.0
50-75%	1.0	9.1	22.1	14.4	10.5	12.3	11.1	13.6
75-90%	0.0	0.0	12.3	5.2	4.2	5.1	4.5	5.7
More than 90%	0.0	0.8	1.9	1.1	1.1	1.1	1.5	0.6
Median estimate	4.1	12.8	31.2	17.5	14.9	16.2	16.0	16.5
Use illicit drugs (including marijuana or inhalants), or abuse prescription drugs?								
None	26.5	3.4	3.4	9.0	10.3	9.7	9.0	10.5
Fewer than 5%	48.0	25.0	12.2	24.7	28.1	26.0	28.0	23.8
5-10%	21.4	28.4	16.3	19.9	23.2	21.6	20.6	22.7
10-20%	1.0	21.6	19.0	17.5	12.4	15.0	13.8	16.3
20-30%	3.1	12.1	29.3	18.1	16.2	16.6	16.9	16.3
30-50%	0.0	8.6	12.2	7.8	6.5	7.8	7.4	8.1
More than 50%	0.0	0.9	7.5	3.0	3.2	3.3	4.2	2.3
Median estimate	3.0	6.9	15.8	9.8	7.2	8.7	8.2	9.1

Table 23. Perceptions of neighborhood environment

Question/Response	Oldest Child in Grade			Gender of Child		All Parents	Adult Alcohol Use	
	6-8	9-10	11-12	Female	Male		Low	High
	%	%	%	%	%	%	%	%
<u>Please choose how true the following statements are.</u>								
There are lots of things for young people to do in our community.								
Definitely not true	11.2	19.7	20.0	16.2	18.7	17.6	17.5	17.6
Mostly not true	25.5	26.5	29.7	28.3	27.8	27.6	26.3	29.0
Mostly true	48.0	40.2	38.7	43.9	38.0	41.6	43.3	39.8
Definitely true	15.3	13.7	11.6	11.6	15.5	13.2	12.9	13.6
Score*	55.8	49.3	47.3	50.3	50.1	50.2	50.5	49.8
Our community is a safe place.								
Definitely not true	0.0	1.7	0.0	0.6	0.5	0.5	0.5	0.6
Mostly not true	0.0	2.6	1.3	1.2	1.6	1.4	2.1	0.6
Mostly true	69.4	62.4	59.4	65.9	61.0	63.0	63.4	62.5
Definitely true	30.6	33.3	39.4	32.4	36.9	35.1	34.0	36.4
Score*	76.9	75.8	79.4	76.7	78.1	77.6	77.0	78.2
In our community, kids are often teased or taunted so much their feelings are hurt.								
Definitely not true	3.1	7.8	6.0	6.5	4.9	5.8	7.9	3.4
Mostly not true	35.1	50.4	51.0	45.6	48.9	46.6	45.0	48.3
Mostly true	37.1	26.1	29.8	28.4	32.1	30.6	32.3	28.7
Definitely true	24.7	15.7	13.2	19.5	14.1	17.1	14.8	19.5
Score*	61.2	49.9	50.1	53.6	51.8	53.0	51.3	54.8

* Score: Definitely not true = 0, Mostly not true = 33, Mostly true = 67, Definitely true = 100.

Table 24. Neighborhood drug involvement

Question/Response	Oldest Child in Grade			Gender of Child		All Parents	Adult Alcohol Use	
	6-8	9-10	11-12	Female	Male		Low	High
	%	%	%	%	%	%	%	%
<u>Please choose how true the following statements are.</u>								
A lot of drugs are sold in our community.								
Definitely not true	5.2	3.6	2.6	3.6	3.8	3.6	3.7	3.5
Mostly not true	44.8	41.1	37.9	40.2	42.9	40.7	36.6	45.3
Mostly true	38.5	41.1	41.2	40.2	39.6	40.4	42.9	37.6
Definitely true	11.5	14.3	18.3	16.0	13.7	15.2	16.8	13.5
Score*	52.1	55.4	58.4	56.2	54.4	55.8	57.6	53.7
A lot of kids in our community use marijuana and other drugs.								
Definitely not true	4.2	4.4	2.0	2.9	3.8	3.3	4.2	2.3
Mostly not true	38.5	36.8	28.3	31.2	36.8	33.7	30.5	37.2
Mostly true	44.8	43.9	50.0	50.0	44.0	46.7	45.8	47.7
Definitely true	12.5	14.9	19.7	15.9	15.4	16.3	19.5	12.8
Score*	55.2	56.4	62.5	59.6	57.0	58.7	60.2	57.0
People in our community are trying to keep kids off drugs.								
Definitely not true	0.0	0.9	1.3	0.6	1.1	0.8	1.0	0.6
Mostly not true	7.1	5.3	7.2	7.1	5.9	6.6	8.4	4.6
Mostly true	58.2	51.8	60.8	55.9	57.8	57.3	55.0	59.8
Definitely true	34.7	42.1	30.7	36.5	35.1	35.3	35.6	35.1
Score*	75.9	78.4	73.6	76.1	75.7	75.7	75.0	76.4

* Score: Definitely not true = 0, Mostly not true = 33, Mostly true = 67, Definitely true = 100.

Table 25. Availability of alcohol, tobacco, drugs , and guns

Question/Response	Oldest Child in Grade			Gender of Child		All Parents	Adult Alcohol Use	
	6-8	9-10	11-12	Female	Male		Low	High
	%	%	%	%	%	%	%	%
<u>If your child wanted to, how easy do you think it would be for him/her to get:</u>								
Alcoholic beverages?								
Very easy	41.8	40.5	53.2	47.4	44.9	46.2	39.2	54.0
Sort of easy	34.7	40.5	34.4	33.3	40.1	36.4	36.1	36.8
Sort of hard	18.4	13.8	8.4	13.5	11.8	12.8	18.0	6.9
Very hard	5.1	5.2	3.9	5.8	3.2	4.6	6.7	2.3
Score*	71.1	72.1	79.0	74.1	75.6	74.7	69.2	80.8
Cigarettes?								
Very easy	19.4	22.4	34.9	27.8	25.7	26.8	25.4	28.3
Sort of easy	29.6	38.8	40.1	34.9	40.1	36.9	36.3	37.6
Sort of hard	26.5	30.2	15.1	24.3	20.9	23.0	23.3	22.5
Very hard	24.5	8.6	9.9	13.0	13.4	13.4	15.0	11.6
Score*	48.0	58.3	66.7	59.2	59.4	59.0	57.3	60.9
Marijuana?								
Very easy	9.2	20.0	25.5	17.8	20.3	19.4	19.1	19.8
Sort of easy	28.6	39.1	41.8	35.5	40.1	37.4	36.6	38.4
Sort of hard	35.7	25.2	21.6	26.6	25.7	26.5	25.8	27.3
Very hard	26.5	15.7	11.1	20.1	13.9	16.7	18.6	14.5
Score*	40.1	54.5	60.6	50.3	55.6	53.2	52.1	54.5
A gun?								
Very easy	1.0	0.9	2.6	1.8	1.6	1.6	1.6	1.7
Sort of easy	2.0	1.7	9.2	7.6	2.2	4.9	5.7	4.0
Sort of hard	23.5	25.9	34.9	26.5	30.6	29.0	27.5	30.6
Very hard	73.5	71.6	53.3	64.1	65.6	64.5	65.3	63.6
Score*	10.2	10.6	20.4	15.7	13.3	14.6	14.5	14.6
A drug like cocaine, heroin, LSD, or amphetamine?								
Very easy	1.0	2.6	10.5	4.7	5.9	5.5	5.2	5.8
Sort of easy	11.2	21.7	21.1	18.9	17.7	18.6	20.2	16.9
Sort of hard	35.7	36.5	37.5	32.0	41.9	36.7	35.8	37.8
Very hard	52.0	39.1	30.9	44.4	34.4	39.2	38.9	39.5
Score*	20.4	29.3	37.1	28.0	31.7	30.1	30.6	29.7
A prescription drug without own Rx, like Ritalin, Xanax, OxyContin?								
Very easy	8.2	14.7	19.0	15.3	13.9	14.7	12.9	16.8
Sort of easy	27.6	30.2	35.3	34.1	29.9	31.6	32.0	31.2
Sort of hard	28.6	25.0	31.4	24.1	33.2	28.6	28.9	28.3
Very hard	35.7	30.2	14.4	26.5	23.0	25.1	26.3	23.7
Score*	36.1	43.1	52.9	46.1	44.9	45.3	43.8	47.0

* Score: Very easy = 100, Sort of easy = 67, Sort of hard = 33, Very hard = 0.

SECTION 6. COMPARISONS

Table 26. Recent substance use

Measure	Grades	Parents 2011	Parents 2007	Youth 2011
<u>30-day prevalence of use:</u>		%	%	%
Alcohol	7-8	0.0	0.8	4.2
	9-12	18.5	19.8	33.8
Cigarettes	7-8	0.0	0.0	0.8
	9-12	2.8	3.3	6.5

Table 27. Risk of harm from substance use

Measure	Grades	Parents 2011	Parents 2007	Youth 2011
<u>Perceived risk of "great" harm</u>		%	%	%
Alcohol	7-8	74.5	74.0	41.9
	9-12	62.6	73.1	28.3
Cigarettes	7-8	82.7	89.6	72.5
	9-12	80.2	78.4	69.9
Marijuana	7-8	80.4	86.5	82.6
	9-12	81.7	90.1	37.2

Table 28. Availability of substances

Measure	Grades	Parents 2011	Parents 2007	Youth 2011
<u>Perceived "easy" availability</u>		%	%	%
Alcohol	7-8	41.8	36.9	22.0
	9-12	46.8	57.2	53.5
Cigarettes	7-8	19.4	24.0	6.7
	9-12	28.6	44.3	35.2
Marijuana	7-8	9.2	15.9	2.8
	9-12	22.7	39.8	30.2
Other illicit drugs	7-8	1.0	8.9	1.2
	9-12	6.5	11.8	4.9
Rx drugs w/o Rx	7-8	8.2	*	*
	9-12	16.8	*	*

* Rx drug question not included.

Table 29. Perception of the community

Measure	Grades	Parents 2011	Parents 2007	Youth 2011
<u>In our community, mostly/definitely true:</u>		%	%	%
Lots of things to do	7-8	63.3	60.6	79.0
	9-12	52.1	49.6	48.7
Community is safe	7-8	100.0	95.1	93.0
	9-12	97.2	96.8	95.1
Kids often bullied	7-8	61.9	62.5	35.3
	9-12	42.4	50.9	34.4
Lot of drugs sold	7-8	50.0	57.7	12.4
	9-12	57.4	69.3	50.8
Lot of kids use marijuana	7-8	57.3	59.6	14.8
	9-12	64.2	71.9	59.5

Table 30. Family management

Measure	Grades	Parents 2011	Parents 2007	Youth 2011
		%	%	%
>2 Hours after school without adults	7-8	8.2	8.1	8.5
	9-12	11.8	10.0	25.4
Discipline when rules broken (mostly/definitely true)	7-8	98.2	100.0	92.2
	9-12	94.7	97.3	81.5
Rules discouraging alcohol (definitely true)	7-8	79.8	89.0	64.9
	9-12	82.6	86.4	42.1
Support when needed (mostly/definitely true)	7-8	98.2	100.0	95.8
	9-12	97.1	100.0	95.5
Share thoughts, feelings (mostly/definitely true)	7-8	91.7	93.8	94.6
	9-12	85.5	85.7	87.5

Table 31. Strategies to prevent drinking

Measure	Grades	Parents 2011	Parents 2007	Youth 2011
		%	%	%
<u>Very important in preventing teens from drinking:</u>				
High price	7-8	11.3	12.1	31.4
	9-12	9.8	7.6	20.2
Check ID's	7-8	69.4	70.7	65.4
	9-12	72.7	68.4	39.3
Friends who don't drink	7-8	91.8	92.7	58.1
	9-12	88.7	91.9	42.6
Parents disapprove	7-8	55.1	62.5	60.3
	9-12	57.8	57.1	40.5
Driving suspension	7-8	68.4	65.0	57.4
	9-12	69.9	69.4	51.6
Fine of \$200	7-8	41.2	44.5	55.3
	9-12	45.5	41.6	29.2
Alcohol education	7-8	54.1	55.9	49.6
	9-12	38.6	37.2	15.9

Table 32. Reasons teens begin drinking

Measure	Grades	Parents 2011	Parents 2007	Youth 2011
		%	%	%
<u>Very important reasons</u>				
Fit in with friends	7-8	86.7	91.3	56.4
	9-12	81.3	92.0	51.0
Curiosity	7-8	72.4	75.0	40.6
	9-12	65.1	75.9	44.1
To have fun	7-8	64.9	67.3	40.7
	9-12	61.8	68.4	73.6
Relieve stress	7-8	31.6	43.5	44.0
	9-12	39.6	46.1	38.4
Drinking in family	7-8	12.2	9.7	22.9
	9-12	11.9	11.1	14.1
Boredom	7-8	34.7	47.5	22.9
	9-12	44.3	48.1	28.4

Table 33. Reasons teens choose not to drink

Measure	Grades	Parents 2011	Parents 2007	Youth 2011
<u>Very important reasons</u>		%	%	%
Personal choice	7-8	89.0	85.0	*
	9-12	91.5	91.2	*
Does not fit lifestyle	7-8	48.0	40.2	64.1
	9-12	46.6	51.8	52.8
Parents disapprove	7-8	55.0	63.5	70.9
	9-12	62.6	61.3	59.2
Friends disapprove	7-8	72.0	67.2	63.6
	9-12	53.9	56.6	38.0
Legal reasons (e.g., "too young")	7-8	24.2	28.6	77.6
	9-12	29.5	28.5	45.5
Alcohol not available	7-8	29.0	28.8	35.1
	9-12	21.1	23.4	21.0
Alcohol education	7-8	56.0	50.6	64.5
	9-12	40.3	43.5	30.0

* Personal Choice not included in youth survey.

Table 34. Issues facing parents of teens

Measure	Grades	Parents 2011	Parents 2007
<u>Issues of great concern:</u>		%	%
Education	7-8	79.4	7.3
	9-12	73.5	11.3
Drugs, alcohol	7-8	53.5	66.9
	9-12	56.0	66.2
Right choices for future	7-8	52.9	46.1
	9-12	56.7	54.6
Communication with teens	7-8	51.0	46.6
	9-12	40.9	41.0
Violence, crime	7-8	28.4	23.4
	9-12	18.9	19.0
Religion	7-8	5.1	10.7
	9-12	11.6	15.5

Table 35. Issues facing teens

Measure	Grades	Parents 2011	Parents 2007
<u>Issues of great concern:</u>		%	%
Fitting in socially	7-8	81.4	66.2
	9-12	64.4	56.3
Peer pressure	7-8	64.7	54.7
	9-12	47.8	50.7
Acceptance of self	7-8	66.7	52.3
	9-12	51.8	52.9
Coping with stress	7-8	48.0	54.1
	9-12	51.0	50.3
Education	7-8	43.1	8.3
	9-12	51.6	9.5
Drugs, alcohol	7-8	19.6	21.1
	9-12	25.7	34.7
Sexual issues	7-8	23.5	21.3
	9-12	19.6	25.6

Appendix

Survey Instrument

Wilton Parent Survey 2011

1. Introduction

This survey is sponsored by Positive Directions on behalf of the Wilton Taskforce to Reduce Substance Abuse Among Youth. Positive Directions--The Center for Prevention and Recovery, has been reaching out to individuals, families and communities in Fairfield County since 1973, providing treatment, counseling and education programs focused on the prevention of and recovery from substance abuse and dependencies.

To encourage you to answer honestly, this survey is completely anonymous.

This survey is open to all parents of Wilton high school and middle school students. In taking the survey, you represent the parents of all Wilton youth. Your cooperation is **very important** in obtaining a scientifically accurate picture of community attitudes. So please, take a few minutes to fill out the survey, whether you hold strong opinions or not. There are 37 questions.

Questions in this survey mirror some of the questions being asked of area youth. Other questions are taken from national and regional surveys. Summary results will be made public as soon as tabulation and analysis is complete.

When you have completed the survey, click **Done>>** at the end. Until you do so, you may back up and change answers.

2. School, Relationships (1)

**In this survey, please answer questions about "YOUR CHILD" in terms of
YOUR OLDEST CHILD WHO IS PRESENTLY ENROLLED IN PUBLIC SCHOOL.**

1. "MY OLDEST CHILD" I am referring to in this survey is in grade:

- ☐ 6 or Below
- ☐ 7
- ☐ 8
- ☐ 9
- ☐ 10
- ☐ 11
- ☐ 12

2. What is the gender of your oldest child that you are referring to in this survey?

- ☐ Female
- ☐ Male
- ☐ Both (Siblings in same grade)

Wilton Parent Survey 2011

3. On a regular weekday, how many hours does your child spend after school without an adult present?

- ☐ None
- ☐ Less Than 1 Hour
- ☐ 1 To 2 Hours
- ☐ 3 To 4 Hours
- ☐ More Than 4 Hours

4. On a typical weekend, how many hours per day does your child spend without an adult present?

- ☐ None
- ☐ Less Than 1 Hour
- ☐ 1 To 2 Hours
- ☐ 3 To 4 Hours
- ☐ 5 To 8 Hours
- ☐ More Than 8 Hours

5. Thinking of the structure of your family, do the adults in your household include:

- ☐ Both biological parents
- ☐ Two adoptive parents
- ☐ One biological parent and one step-parent
- ☐ Two foster parents
- ☐ Only one parent (or one legal guardian)
- ☐ One parent, but frequent visits to the other parent
- ☐ Relative(s) who act as parents

Other (please specify)

3. School, Relationships (2)

Wilton Parent Survey 2011

6. How satisfied are you with the quality of education your child is receiving at his/her school?

- ☐ Very Satisfied
- ☐ Somewhat Satisfied
- ☐ Somewhat Dissatisfied
- ☐ Very Dissatisfied
- ☐ No Opinion

7. How safe do you feel your child's school is?

- ☐ Very Safe
- ☐ Fairly Safe
- ☐ Fairly Unsafe
- ☐ Very Unsafe
- ☐ No Opinion

8. What kind of grades does your child mostly get? (Please choose one or two)

- ☐ A's
- ☐ B's
- ☐ C's
- ☐ D's
- ☐ F's

9. Please choose how true the following statements are for you.

	Definitely Not True	Mostly Not True	Mostly True	Definitely True
When our child is away from home, my spouse or I know where he/she is, and with whom.	<input type="radio"/>	<input type="radio"/>	<input type="radio"/>	<input type="radio"/>
After my child has been out with friends, I would know if he/she had been drinking or using drugs.	<input type="radio"/>	<input type="radio"/>	<input type="radio"/>	<input type="radio"/>
If our child breaks family rules, he/she is usually disciplined.	<input type="radio"/>	<input type="radio"/>	<input type="radio"/>	<input type="radio"/>
We give our child lots of chances to do fun things with our family.	<input type="radio"/>	<input type="radio"/>	<input type="radio"/>	<input type="radio"/>
We give our child help and support when he/she needs it.	<input type="radio"/>	<input type="radio"/>	<input type="radio"/>	<input type="radio"/>
Our child shares thoughts and feelings with me or my spouse.	<input type="radio"/>	<input type="radio"/>	<input type="radio"/>	<input type="radio"/>
We usually ask if our child's homework is done.	<input type="radio"/>	<input type="radio"/>	<input type="radio"/>	<input type="radio"/>
My spouse or I participate in our child's activities at school, including attendance at school events?	<input type="radio"/>	<input type="radio"/>	<input type="radio"/>	<input type="radio"/>

Wilton Parent Survey 2011

4. Concerns

10. How true are these statements? Our family has clear rules for our child:

	Definitely Not True	Mostly Not True	Mostly True	Definitely True
Discouraging smoking cigarettes or using tobacco.	<input type="radio"/>	<input type="radio"/>	<input type="radio"/>	<input type="radio"/>
Discouraging drinking alcoholic beverages.	<input type="radio"/>	<input type="radio"/>	<input type="radio"/>	<input type="radio"/>
Governing responsible use of alcohol.	<input type="radio"/>	<input type="radio"/>	<input type="radio"/>	<input type="radio"/>

11. How concerned are you that your child might try marijuana at some point?

- ☐ Very Concerned
- ☐ Somewhat Concerned
- ☐ Not Very Concerned
- ☐ Not Concerned At All
- ☐ No Opinion

12. How concerned are you that your child might try another illicit drug (like cocaine or amphetamine) at some point?

- ☐ Very Concerned
- ☐ Somewhat Concerned
- ☐ Not Very Concerned
- ☐ Not Concerned At All
- ☐ No Opinion

13. As a parent, how confident are you that you would know what to do if you believed your child was drinking alcoholic beverages?

- ☐ Very Confident
- ☐ Fairly Confident
- ☐ Not Too Confident
- ☐ Not Confident At All
- ☐ No Opinion

Wilton Parent Survey 2011

14. As a parent, how confident are you that you would know what to do if you believed your child was using illicit drugs (like marijuana, cocaine or amphetamine)?

- ☐ Very Confident
- ☐ Fairly Confident
- ☐ Not Too Confident
- ☐ Not Confident At All
- ☐ No Opinion

15. Have you ever in your life reached out for help from a doctor, counselor or other professional regarding your child's alcohol or drug use?

- ☐ No
- ☐ Yes
- ☐ Not Applicable

5. Usage

16. Do any adults who live in your household smoke cigarettes?

- ☐ No
- ☐ Yes

17. In the past 12 months, some of my child's friends under age 21 consumed alcohol at our home.

- ☐ No
- ☐ Yes

18. In the past 12 months, I provided alcohol to someone under age 21 other than my own child..

- ☐ No
- ☐ Yes

Wilton Parent Survey 2011

19. In the recent past, how would you characterize the use of alcohol by either you or your spouse?

	Never	Rarely	Sometimes	Frequently
Alcoholic beverage(s) with meals at home or restaurants	<input type="radio"/>	<input type="radio"/>	<input type="radio"/>	<input type="radio"/>
Cocktail(s) before meals	<input type="radio"/>	<input type="radio"/>	<input type="radio"/>	<input type="radio"/>
Drink(s) at parties outside your home	<input type="radio"/>	<input type="radio"/>	<input type="radio"/>	<input type="radio"/>
Host parties at which alcohol is served	<input type="radio"/>	<input type="radio"/>	<input type="radio"/>	<input type="radio"/>
Alcoholic beverage(s) at bars	<input type="radio"/>	<input type="radio"/>	<input type="radio"/>	<input type="radio"/>

20. Did you know that Connecticut Legislature recently passed a state law that prohibits serving alcohol, even on private property, to underage youth who are not family members?

- ☐ No
- ☐ Yes

6. Importance of Issues

21. What do you feel are the most important issues you face today as the parent of a teenager? (Please rate each issue.)

	Of Great Concern	Of Some Concern	Not An Issue
Safety	<input type="radio"/>	<input type="radio"/>	<input type="radio"/>
Violence/Crime	<input type="radio"/>	<input type="radio"/>	<input type="radio"/>
Drugs/Alcohol	<input type="radio"/>	<input type="radio"/>	<input type="radio"/>
Education	<input type="radio"/>	<input type="radio"/>	<input type="radio"/>
Dropping Out Of School	<input type="radio"/>	<input type="radio"/>	<input type="radio"/>
Peer Pressure	<input type="radio"/>	<input type="radio"/>	<input type="radio"/>
Communication With Teens	<input type="radio"/>	<input type="radio"/>	<input type="radio"/>
Consistency of Discipline	<input type="radio"/>	<input type="radio"/>	<input type="radio"/>
Teen Pregnancy/Sexuality	<input type="radio"/>	<input type="radio"/>	<input type="radio"/>
Morals/Family Values	<input type="radio"/>	<input type="radio"/>	<input type="radio"/>
Media Influence/Cultural Environment	<input type="radio"/>	<input type="radio"/>	<input type="radio"/>
Financial Issues	<input type="radio"/>	<input type="radio"/>	<input type="radio"/>
Making Right Choices For Their Future	<input type="radio"/>	<input type="radio"/>	<input type="radio"/>
Driving	<input type="radio"/>	<input type="radio"/>	<input type="radio"/>
Religion	<input type="radio"/>	<input type="radio"/>	<input type="radio"/>

Other (please specify)

Wilton Parent Survey 2011

22. From the point of view of teenagers like your own, what do you think are the most important issues they face? (Please rate each issue.)

	Of Great Concern	Of Some Concern	Not An Issue
Fitting In/Social Activities	<input type="radio"/>	<input type="radio"/>	<input type="radio"/>
Peer Pressure	<input type="radio"/>	<input type="radio"/>	<input type="radio"/>
Acceptance of Self	<input type="radio"/>	<input type="radio"/>	<input type="radio"/>
Drugs/Alcohol	<input type="radio"/>	<input type="radio"/>	<input type="radio"/>
Education	<input type="radio"/>	<input type="radio"/>	<input type="radio"/>
Dropping Out Of School	<input type="radio"/>	<input type="radio"/>	<input type="radio"/>
Sexual Issues	<input type="radio"/>	<input type="radio"/>	<input type="radio"/>
Gangs/Violence	<input type="radio"/>	<input type="radio"/>	<input type="radio"/>
Gaining Independence	<input type="radio"/>	<input type="radio"/>	<input type="radio"/>
Communication with Parents	<input type="radio"/>	<input type="radio"/>	<input type="radio"/>
Coping With Stress	<input type="radio"/>	<input type="radio"/>	<input type="radio"/>
Finding A Job	<input type="radio"/>	<input type="radio"/>	<input type="radio"/>
Morals/Family Values	<input type="radio"/>	<input type="radio"/>	<input type="radio"/>
Media Influence/Cultural Environment	<input type="radio"/>	<input type="radio"/>	<input type="radio"/>
Financial Issues	<input type="radio"/>	<input type="radio"/>	<input type="radio"/>
Making Good Decisions For Their Future	<input type="radio"/>	<input type="radio"/>	<input type="radio"/>
Driving	<input type="radio"/>	<input type="radio"/>	<input type="radio"/>
Religion	<input type="radio"/>	<input type="radio"/>	<input type="radio"/>
Other (please specify)			

7. Substances (1)

Wilton Parent Survey 2011

23. What do you think are the most important reasons teenagers begin drinking alcoholic beverages? (Please rate each reason.)

	Very Important	Somewhat Important	Not Very Important
To fit in with friends	<input type="radio"/>	<input type="radio"/>	<input type="radio"/>
Parent or others in family drink	<input type="radio"/>	<input type="radio"/>	<input type="radio"/>
Alcoholic beverages easily available	<input type="radio"/>	<input type="radio"/>	<input type="radio"/>
Family tradition for special occasions	<input type="radio"/>	<input type="radio"/>	<input type="radio"/>
Fits chosen lifestyle	<input type="radio"/>	<input type="radio"/>	<input type="radio"/>
Boredom	<input type="radio"/>	<input type="radio"/>	<input type="radio"/>
Relieve stress	<input type="radio"/>	<input type="radio"/>	<input type="radio"/>
Coping with serious personal issues	<input type="radio"/>	<input type="radio"/>	<input type="radio"/>
Curiosity	<input type="radio"/>	<input type="radio"/>	<input type="radio"/>
To have fun	<input type="radio"/>	<input type="radio"/>	<input type="radio"/>

Other (please specify)

24. Thinking of teenagers who do NOT drink, what do you think are the most important reasons that influence them NOT to drink? (Please rate each reason.)

	Very Important	Somewhat Important	Not Very Important
Personal choice	<input type="radio"/>	<input type="radio"/>	<input type="radio"/>
Disapproval of parent(s)	<input type="radio"/>	<input type="radio"/>	<input type="radio"/>
Disapproval of friends or peers	<input type="radio"/>	<input type="radio"/>	<input type="radio"/>
Bad experiences of family or friends	<input type="radio"/>	<input type="radio"/>	<input type="radio"/>
Education about alcohol	<input type="radio"/>	<input type="radio"/>	<input type="radio"/>
Health reasons	<input type="radio"/>	<input type="radio"/>	<input type="radio"/>
Legal reasons (including "I am too young")	<input type="radio"/>	<input type="radio"/>	<input type="radio"/>
Because they feel it is wrong (ethically or morally)	<input type="radio"/>	<input type="radio"/>	<input type="radio"/>
Does not fit chosen lifestyle (athletics or other activities)	<input type="radio"/>	<input type="radio"/>	<input type="radio"/>
Alcoholic beverages are not available	<input type="radio"/>	<input type="radio"/>	<input type="radio"/>

Other (please specify)

8. Substances (2)

Wilton Parent Survey 2011

25. In the past 30 days, on how many days do you think your child probably:

	None	1-2 Days	3-5 Days	6-10 Days	More Than 10 Days	Don't Know
Smoked at least one cigarette?	<input type="radio"/>	<input type="radio"/>	<input type="radio"/>	<input type="radio"/>	<input type="radio"/>	<input type="radio"/>
Drank an alcoholic beverage (more than just a few sips)?	<input type="radio"/>	<input type="radio"/>	<input type="radio"/>	<input type="radio"/>	<input type="radio"/>	<input type="radio"/>

26. How much do you think teenagers risk harming themselves (physically or in other ways) if they:

	No Risk	Slight Risk	Moderate Risk	Great Risk
Smoke several cigarettes every day?	<input type="radio"/>	<input type="radio"/>	<input type="radio"/>	<input type="radio"/>
Drink one or two alcoholic beverages (beer, wine or liquor) at least once a week?	<input type="radio"/>	<input type="radio"/>	<input type="radio"/>	<input type="radio"/>
Use marijuana regularly?	<input type="radio"/>	<input type="radio"/>	<input type="radio"/>	<input type="radio"/>

27. How true is this statement? -- In our home, our child could not access alcoholic beverages even if he/she wanted to (e.g., alcohol is stored in a locked cabinet).

- | | |
|--------------------------------------|--|
| <input type="radio"/> Certainly True | <input type="radio"/> Certainly Not True |
| <input type="radio"/> Maybe True | <input type="radio"/> No Alcoholic Beverages In Our Home |
| <input type="radio"/> Maybe Not True | |

28. My own concerns about underage drinking in general, compared to other parents I know, are:

- ☐ I am more concerned
- ☐ About the same level of concern
- ☐ I am less concerned

29. When it comes to monitoring my child's drinking, compared to other parents I know, I am:

- ☐ More strict
- ☐ About the same
- ☐ More lenient

Wilton Parent Survey 2011

30. If you had to guess, about how many students in your child's grade do you think drink alcoholic beverages at least once a week?

- ☐ None
- ☐ Fewer than 10%
- ☐ Between 10% and 25%
- ☐ Between 25% and 50%
- ☐ Between 50% and 75%
- ☐ Between 75% and 90%
- ☐ More than 90%

9. Community

31. Please choose how true the following statements are.

	Definitely Not True	Mostly Not True	Mostly True	Definitely True
There are lots of things for young people to do in our community.	<input type="radio"/>	<input type="radio"/>	<input type="radio"/>	<input type="radio"/>
Our community is a safe place.	<input type="radio"/>	<input type="radio"/>	<input type="radio"/>	<input type="radio"/>
A lot of drugs are sold in our community.	<input type="radio"/>	<input type="radio"/>	<input type="radio"/>	<input type="radio"/>
A lot of kids in our community use marijuana and other drugs.	<input type="radio"/>	<input type="radio"/>	<input type="radio"/>	<input type="radio"/>
People in our community are trying to keep kids off drugs.	<input type="radio"/>	<input type="radio"/>	<input type="radio"/>	<input type="radio"/>
In our community, kids are often teased or taunted so much their feelings are hurt.	<input type="radio"/>	<input type="radio"/>	<input type="radio"/>	<input type="radio"/>

32. If your child wanted to, how easy do you think it would be for him/her to get:

	Very Easy	Sort Of Easy	Sort Of Hard	Very Hard
Alcoholic beverages?	<input type="radio"/>	<input type="radio"/>	<input type="radio"/>	<input type="radio"/>
Cigarettes?	<input type="radio"/>	<input type="radio"/>	<input type="radio"/>	<input type="radio"/>
Marijuana?	<input type="radio"/>	<input type="radio"/>	<input type="radio"/>	<input type="radio"/>
A gun?	<input type="radio"/>	<input type="radio"/>	<input type="radio"/>	<input type="radio"/>
A drug like cocaine, heroin, LSD, or amphetamine?	<input type="radio"/>	<input type="radio"/>	<input type="radio"/>	<input type="radio"/>
A prescription drug without own Rx, like Ritalin, Xanax, OxyContin?	<input type="radio"/>	<input type="radio"/>	<input type="radio"/>	<input type="radio"/>

Wilton Parent Survey 2011

33. How many of your child's close friends do you think:

	None	Some	Most
Smoke cigarettes?	<input type="radio"/>	<input type="radio"/>	<input type="radio"/>
Drink alcoholic beverages?	<input type="radio"/>	<input type="radio"/>	<input type="radio"/>
Use marijuana?	<input type="radio"/>	<input type="radio"/>	<input type="radio"/>
Use inhalants (things you inhale, like glue, paint, aerosol sprays, whippets, or snappers)	<input type="radio"/>	<input type="radio"/>	<input type="radio"/>
Have tried a drug like cocaine, LSD, heroin, amphetamine, or ketamine?	<input type="radio"/>	<input type="radio"/>	<input type="radio"/>
Have used prescription medicines on their own, without a doctor telling them to?	<input type="radio"/>	<input type="radio"/>	<input type="radio"/>
Have played games for money, like poker or blackjack?	<input type="radio"/>	<input type="radio"/>	<input type="radio"/>
Are considered "bullies"?	<input type="radio"/>	<input type="radio"/>	<input type="radio"/>

10. Substances (3)

34. In the past year, how often do you think your child has ridden as a passenger with a driver who had been drinking alcohol (including adults)?

- ☐ Never
☐ Rarely
☐ Several times
☐ Fairly often

35. How important do you think the following are in preventing teenagers from drinking alcoholic beverages?

	Very Important	Somewhat Important	Not Important
High price	<input type="radio"/>	<input type="radio"/>	<input type="radio"/>
Checking ID in stores and bars	<input type="radio"/>	<input type="radio"/>	<input type="radio"/>
Advertisements that show the problems associated with drinking	<input type="radio"/>	<input type="radio"/>	<input type="radio"/>
Friends who don't drink	<input type="radio"/>	<input type="radio"/>	<input type="radio"/>
Friends who disapprove of drinking	<input type="radio"/>	<input type="radio"/>	<input type="radio"/>
Parental strictness about drinking	<input type="radio"/>	<input type="radio"/>	<input type="radio"/>
Having driver's license suspended for drinking	<input type="radio"/>	<input type="radio"/>	<input type="radio"/>
Being fined about \$200 for drinking	<input type="radio"/>	<input type="radio"/>	<input type="radio"/>
Alcohol education in school	<input type="radio"/>	<input type="radio"/>	<input type="radio"/>
Alcohol-free activities (like dances, concerts, or sporting events)	<input type="radio"/>	<input type="radio"/>	<input type="radio"/>
Fear of addiction	<input type="radio"/>	<input type="radio"/>	<input type="radio"/>
Breathalyzer tests	<input type="radio"/>	<input type="radio"/>	<input type="radio"/>
Other (please specify)			

Wilton Parent Survey 2011

36. About how many students *in your child's grade* do you think use illicit drugs (including marijuana or inhalants), or abuse prescription drugs?

- ☐ None
- ☐ Fewer than 5%
- ☐ Between 5% and 10%
- ☐ Between 10% and 20%
- ☐ Between 20% and 30%
- ☐ Between 30% and 50%
- ☐ More than 50%

11. Personal

THIS SECTION ASKS QUESTIONS ABOUT YOU

37. I have a child in grade (please check all that apply):

- ☐ Preschool
- ☐ Pre-K through 5
- ☐ 6
- ☐ 7
- ☐ 8
- ☐ 9
- ☐ 10
- ☐ 11
- ☐ 12
- ☐ Beyond 12 (e.g., college or work)

38. What is your gender?

- ☐ Female
- ☐ Male

39. Do you think of yourself as Hispanic or Latino?

- ☐ No
- ☐ Yes

Wilton Parent Survey 2011

40. How do you describe yourself?

- ☐ White or Caucasian
- ☐ Black or African American
- ☐ Asian or Pacific Islander
- ☐ Native American
- ☐ Other (please specify)

12. Thanks!

Positive Directions and everybody in Wilton thank you very much for sharing your thoughts! To repeat, please be assured that this survey is **anonymous**.

Make sure you are all finished, then click on **Done>>** at the bottom of this screen.

Thanks!!